

# FITTED KITCHENS MEASURING GUIDE

Every kitchen design starts with the room measurements.

This guide will help you provide us with the detail required to create an initial design and estimate.

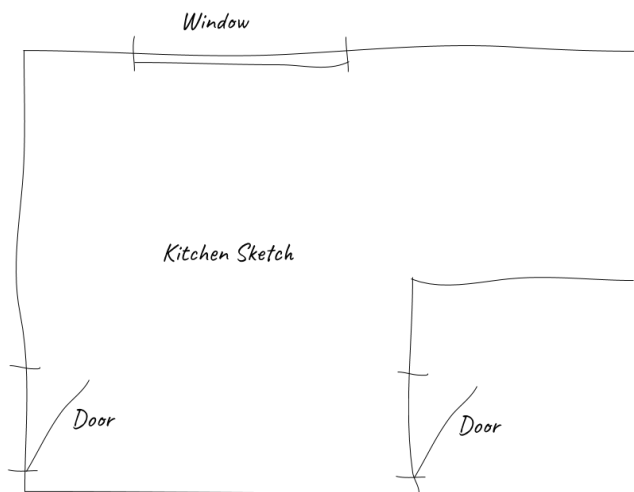
We will carry out a visit before you order to check dimensions and make any final adjustments to your design and estimate as necessary.

## ROOM OUTLINE

Start by sketching the outline of the room, including the positions of the doors and windows.

Here is an example sketch:

*Don't worry about being perfect and to scale, as we will visit to measure your room when you are ready to order.*



## MEASURING

**WALLS** - Measure each wall at worktop/mid height, as this will be easier with your existing kitchen/bathroom in place. It's best to measure in sections and in a set sequence, e.g. clockwise around the room.

**WINDOWS** - Measure the position of the windows, including the frame. Note their height and distance from the floor.

**DOORS** - Measure the width of the doors including the architrave, and note how they open from the room, e.g. outwards, hinge on the right.

**CEILING** - Measure the ceiling height in a few places, as it may vary. Note the lowest dimension as this will guide the planner to the tallest units you can have in the room.

# FITTED KITCHENS MEASURING GUIDE

JOHN  
LEWIS  
& PARTNERS

## SERVICES & FIXTURES

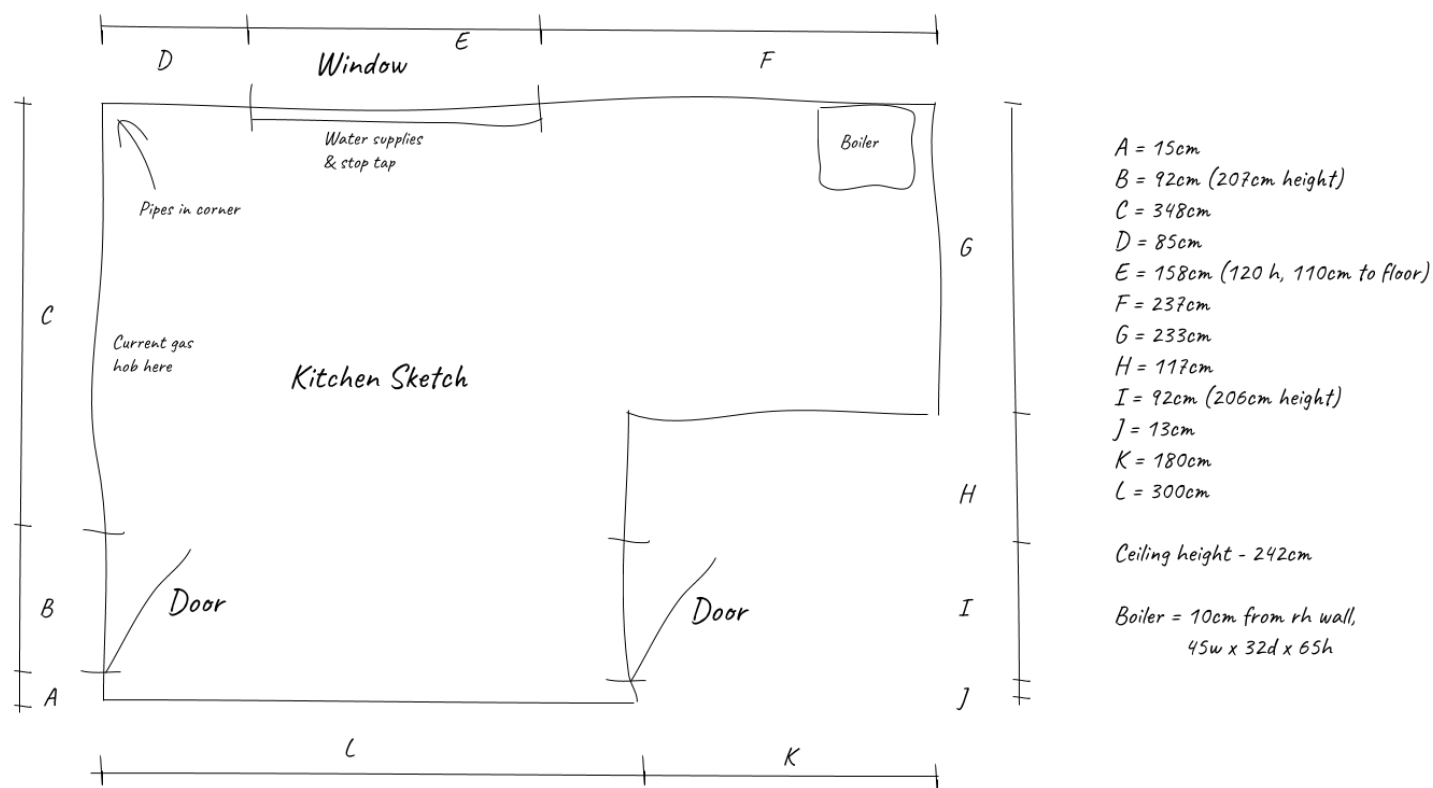
Note the position of your gas/water/electrical supplies within the room. This will help with the layout of the design.

If there is a boiler and/or radiators in the room, measure them and their position and add it to your sketch.

Your Planner may have more questions for you with regards to types and position of supplies in place for any appliances, etc. - remember we will visit your home when you are ready to order to check everything and amend your estimate as required.

## COMPLETED MEASUREMENTS

Once you have added all the sizes to your plan - it should look something like this:



Adding together the individual measurements and comparing to the other side of the room will help to see if you've missed anything!

**NOTE:** Providing photos of the room, along with your measurement sketch, will help your Planner create the perfect design for you.

