
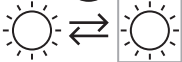


Product information	<ul style="list-style-type: none"> Indoor/bathroom use only Non-dimmable Clean the fitting with a soft dry cloth. Do not use abrasive chemical cleaners as this will damage the finish Do not use this product if the shade is cracked or damaged. Do not use the product without the shade attached
---------------------	---

Aftercare and Troubleshooting	If there are technical issues with this product that you can't solve, please contact your nearest John Lewis & Partners shop or call Technical Support on 03301 230106.
-------------------------------	---

Specification	Max power: 12.2W Rated input: 220 –240V, 50Hz IP rating: 44 Weight: 0.55kg Lumen output: 1000 Colour temperature: Warm white (3000K) This product contains a light source of energy efficiency class C For further information please visit: www.lighting-info.co.uk/93073
---------------	--





Replaceable light source by a professional




Replaceable control gear by a professional

5-year guarantee	At John Lewis & Partners we test every light to high quality standards. That means we can offer you a 5-year guarantee.
------------------	---

Recycling	This symbol  indicates that this product should not be treated as normal household waste and it should be recycled. John Lewis & Partners do not operate instore take back, but as members of the Distributor Take Back scheme have funded the development and upgrade of recycling facilities across the UK. Please take it to your nearest collection facility or for further details contact your local council or visit www.recycle-more.co.uk .
-----------	---

John Lewis plc
SW1V 2QQ
johnlewis.com

Made in China

CE

IP44

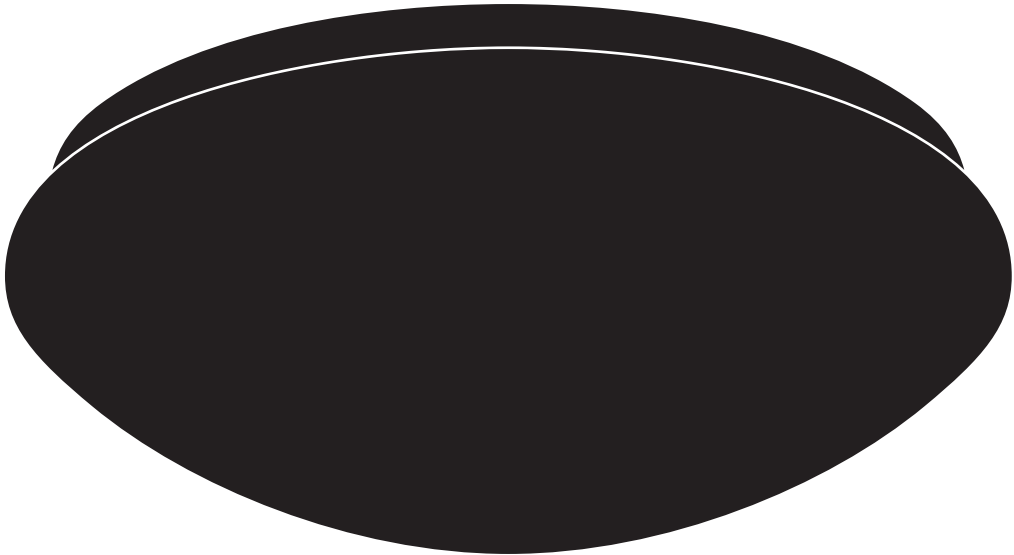


26/03/2025

Please retain these instructions for future reference.



SAINT INTEGRATED LED BATHROOM FLUSH USER GUIDE



Product Code:
10504509

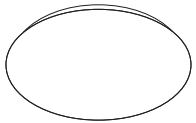


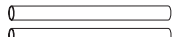
Thank you for purchasing this Saint LED Bathroom Ceiling Light. Please read the instructions carefully before use to ensure safe and satisfactory operation of this product.

Warnings!

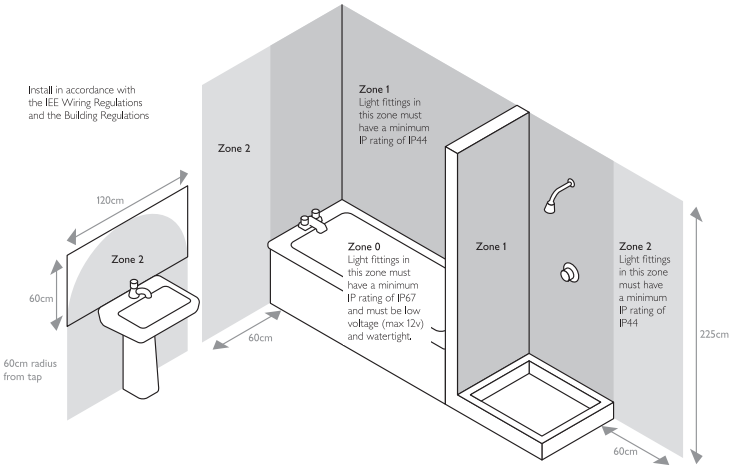
This is a Class II product and must NOT be earthed.

Please read these instructions carefully before commencing any work.
It is recommended that this fitting is installed by a qualified electrician.
Install in accordance with the IEE Wiring regulations and the Building Regulations.
To prevent electrocution switch off at mains supply before installing or maintaining this fitting. Ensure other persons cannot restore the electrical supply without your knowledge.
If you are in any doubt, please consult a qualified electrician.
This light fitting should be connected to a 5 amp fused circuit.
If replacing an existing fitting, make a note of the connections.
This product is suitable for installation on surfaces with normal flammability e.g. wood, plasterboard, masonry. It is not suitable for use on highly flammable surfaces (e.g. polystyrene, textiles).
For your safety, always switch off the supply before cleaning or removing shades.

Parts List

Light Fitting		1	Wall plugs		2
			Screws		2
			Insulation sleeves		2

This product has special protection against the ingress of moisture and is IP44 rated. This product is suitable for use in Zone 2, and outside Zones of a bathroom.
See diagram. **If installing in a bathroom a 30mA RCD must be used in accordance with IEE Wiring Regulations and the Building Regulations.**



Fixing Instructions

Make sure you have the following items which are required to install this light fitting:
Small electrical screwdriver, cross head screwdriver
The installation of this fitting will be much easier with the help of an assistant.

Step 1

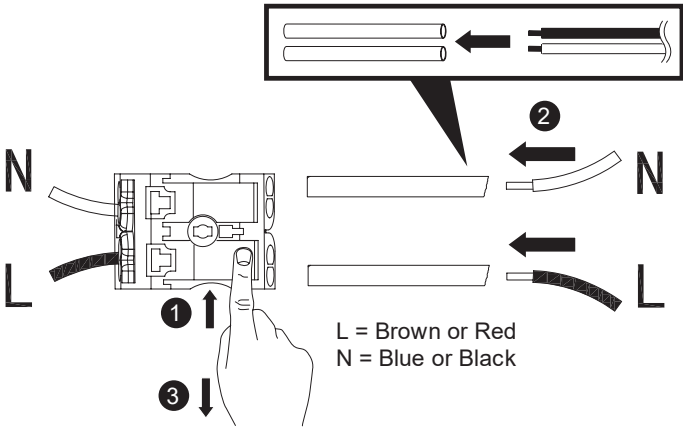
Existing ceiling roses must be completely removed before installation of a new product.
Before removing the existing fitting or ceiling rose, **carefully note the position of each set of wires.**

Step 2

Locate the ceiling plate to the ceiling, ensure there is a joist at the point of fixing to support the weight of the product, mark the position of the fixing holes. Attach the ceiling plate to the ceiling using the screws supplied. Take care to avoid damaging any concealed wiring and pipes.

Step 3

Having identified the household wiring from your existing light fitting, connect to the connection block inside the product in the following way (see diagram below).



Check that.....

You have correctly identified the house wires.
The connections are tight.
No loose strands have been left out of the connection block.
The lid is fitted back onto the terminal block case.

Step 4

When completed, ensure that there are no bare or loose strands of wire exposed.

Step 5 Attaching the Shade

To attach the shade, simply screw it in place.
Do not overtighten.

Step 6

Replace fuse or circuit breaker and switch on.
Your light is now ready for use.

