
**Caring for
your product**

Ensure that the product has been switched off and allowed to cool. Using a soft, dry cloth wipe clean the shade and ceiling cup only, do not wipe the bulb.

**Aftercare and
Troubleshooting**

If you experience any unresolvable technical issues with the product, contact your nearest John Lewis & Partners shop or John Lewis & Partner Technical Support on 03301 230106.

Specification

Max. power: 60W
Voltage: 220–240V, 50Hz
IP rating: 20
Weight: 2.2kg

**Recommended Bulb**

9W LED ES Classic (not included)

5 year guarantee

At John Lewis & Partners we test every light to high quality standards so we are able to offer you a 5 year guarantee.

Recycling

This symbol  indicates that this product should not be treated as normal household waste and it should be recycled. John Lewis & Partners do not operate instore take back, but as members of the Distributor Take Back scheme have funded the development and upgrade of recycling facilities across the UK. Please take it to your nearest collection facility or for further details contact your local council or visit www.recycle-more.co.uk.



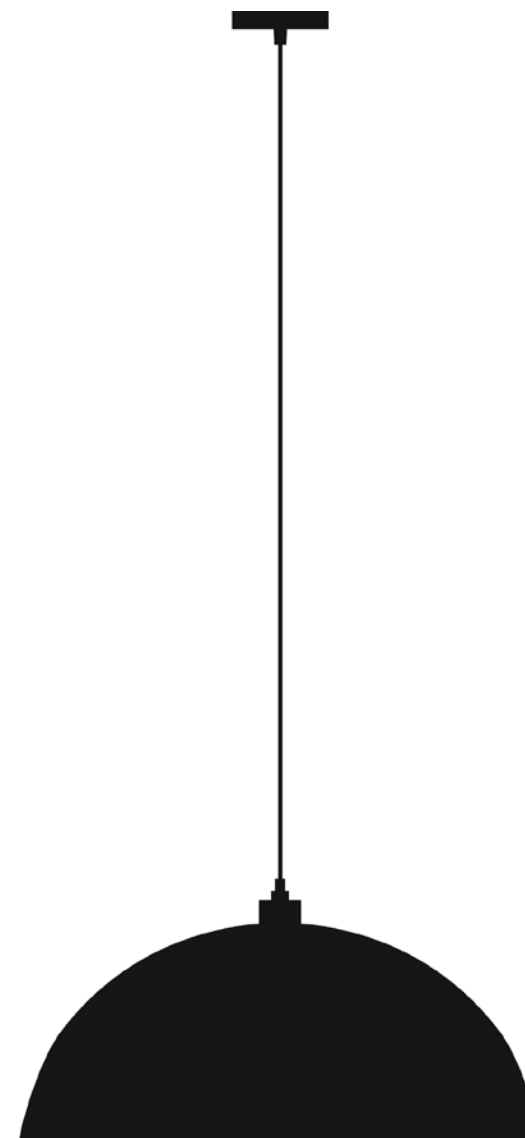
John Lewis Partnership
171 Victoria Street
London SW1E 5NN
johnlewis.com

Made in India

Please retain these instructions for future reference.



METAL DOME PENDANT CEILING LIGHT USER GUIDE



Thank you for purchasing this Metal Done Pendant Ceiling Light. Please read the instructions carefully before use to ensure safe and satisfactory operation of this product.

Warnings



- For your safety, this product must be installed in accordance with local Building Regulations.
- If in any doubt, or where required by law, consult a competent person who is registered with an electrical self-certification scheme. Further information is available online or from your Local Authority.
- The bulb and surrounding parts can become extremely hot during use.
- When changing a bulb always switch off at the mains first and allow the bulb to cool down before handling.
- The max power indicated in the 'Specifications' section must not be exceeded.
- Dispose of used bulb carefully.
- For indoor use only.
- This product is Class I and must be earthed.
- To prevent electrocution, ensure the mains electricity supply is switched off at the fuse board before installing or maintaining the fitting. Ensure the electricity supply cannot be restored without your knowledge.
- If replacing an existing fitting, make a note of the connections.
- 'Ensure all green/yellow wires and terminals are connected to the supply earth'
- Terminals and cables in your light fitting are marked as follows:

Terminal Marking	Fitting/Wiring	Mains Wiring
E	Green/Yellow	Green/Yellow (Earth)
N	Blue	Black or Blue (Neutral)
L	Brown	Red or Brown (Live)

- Please note, you may find that there are only 2 wires in your household mains supply in which case there is no earth. Please contact a qualified electrician to provide an earth facility.
- Please note that the fixings supplied may not be suitable for all mounting structures. Ensure that appropriate fixings are used and the integrity of the supporting structure is sufficient to hold the weight of the pendant. If in any doubt, seek advice from a relevant competent person.

Product assembly

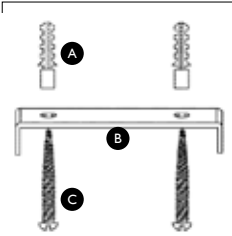
Parts list	Description	Image	Quantity
A	WALL PLUGS		X2
B	MOUNTING BRACKET		X1
C	FIXING SCREWS		X2
D	TERMINAL BLOCK		X1
E	MOUNTING SCREWS		X2
F	ELECTRIC PENDANT ASSEMBLY		X1

1



Remove the mounting bracket B from the ceiling cup by removing screws E at the side of the ceiling cup.

2



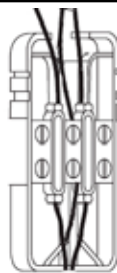
Using the screws C and wall plugs A, firmly fix the mounting bracket B to a ceiling joist or other solid mounting adjacent to the supply wiring.

3

The overall drop height of this product can be altered. Adjust the cord-grip inside the ceiling cup and adjust the cable length to your required drop height.

Product assembly

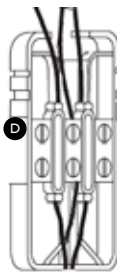
4



Connecting to the house mains, strip each of the three wires to 2cm. Twist and double back on itself.

5

D

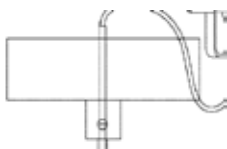


Loosen the terminal block D screws to allow the wires to be connected as per the terminal and wiring markings in 'Warnings' section. Insert the wires and tighten the terminals ensuring each strand of wire is secured.

6

Cover the terminal block with 2 layers of good quality electrical insulation tape, continuing at least 2cm either side of the connections.

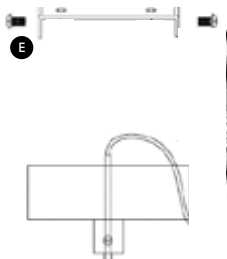
7



Neatly place the wires and terminal block inside the ceiling cup.

8

E



Fit the ceiling cup on to the mounting bracket, ensuring that no wires are trapped during installation. Secure using the mounting screws. (E)

Product assembly

9

Insert/Screw in the bulb without using excessive force. The bulb type can be found in the 'Specification' section.

10

Restore your mains electricity supply at the fuse board and check the operation of your fitting.

