

Recommended bulb

1 x 3-6 Watt E27 (ES) energy efficient LED candle bulb

or

1 x 28 Watt E27 (ES) eco halogen candle

Bulb not included

Specification

Max power: 40W


Voltage: 220~240V, 50/60Hz

IP20

Weight 2.25 Kg



Please retain these instructions for future reference.

This symbol  indicates that this product should not be treated as normal house-hold waste and it should be recycled. John Lewis does not operate in store take back, but as members of the Distributer Take Back scheme have funded the development and upgrade of recycling facilities across the UK. Please take it to your nearest collection facility or for further details contact your local council or visit www.recycle-more.co.uk.

We have taken great care to ensure that this product reaches you in perfect condition. However, should any parts be damaged or missing please e-mail lightingparts@JLPspares.co.uk

Trouble shooting:

Why is the light not working when switched on?

Check your power supply is switched on

Turn off light and check that the bulb is inserted correctly

Check the bulb is still in working order.

John Lewis partnership

171 Victoria Street

London SW1E 5NN

Johnlewis.com

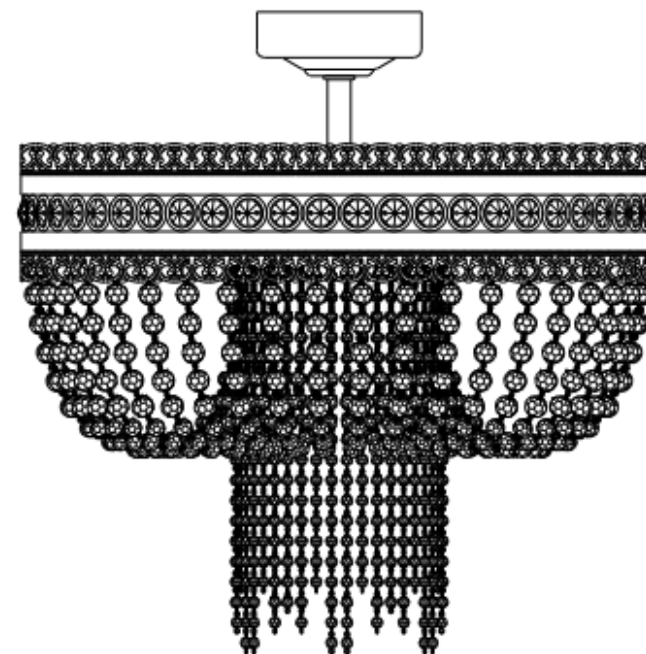
Made in China

Issue 2 04/19

John Lewis

User manual

LUCIA BEADED SEMI FLUSH



Thank you for purchasing this Lucia semi flush. Please read the instructions carefully before use to ensure safe and satisfactory operations of this product. Please keep this instruction for future reference.

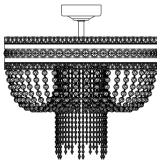

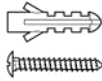
Warnings!

For your safety, this product must be installed in accordance with local Building Regulations.
If in any doubt, or where required by the law, consult a competent person who is registered with an electrical self-certification scheme. Further information is available online or phone your Local Authority.
To prevent electric shock, switch off the mains supply before installing or maintaining this product. Ensure other persons cannot restore the electricity supply without your knowledge.
Always use the correct bulb type with the correct wattage as indicated in the specification table. This product is Class I = $\frac{1}{\text{I}}$ and should be fitted to a lighting Supply (with earth) protected by a 5 amp fuse or equivalent circuit breaker.
When changing the bulb, always switch off at the mains and allow the old bulb to cool down before handling. Dispose of used bulbs carefully.
Caution! The bulb and surrounding parts can become hot during use.
For indoor use only.

Care instructions

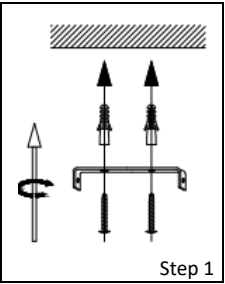
We recommend cleaning with a soft dry cloth. Do not use abrasive materials as these will damage the finish.
Replace bulb from John Lewis or established brand of the same type and compatibility.

Parts list

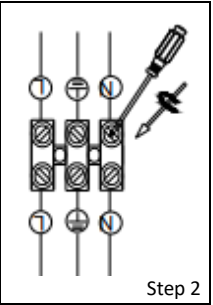
	Part List	Qty		Part List	Qty
A		1	B		1
			C		2

Assembly

Never install your appliance on a wet, freshly painted or plastered surface. Ensure the house electricity supply is switched off at the fuse box. If removing an existing fitting, note down all wiring connections. Check the fixings will not touch any existing wiring before drilling and attaching the light to the wall.
Ensure you thread the ceiling wires through the black insulating tube fixed to the appliance.



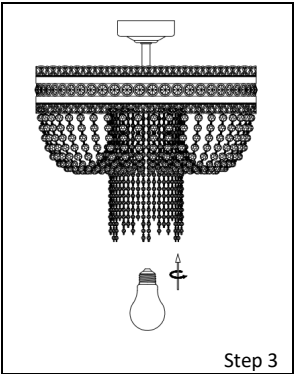
Step 1
Remove mounting bracket from fitting by removing the retaining screws and any washers, retain for later. Using the mounting bracket as a template, mark and then drill the fixing holes in the ceiling (ensure the screws are firmly fixed into a solid or other suitable mounting and not just the plasterboard.) Take care not to damage wiring. Attach mounting bracket to the mounting surface using suitable fixings. Do not attach fitting to mounting bracket at this stage. Make sure no wires are trapped in the process.



Step 2
Ensuring that the power has been isolated, lever open the terminal block box cover with a screwdriver then feed supply cable through rubber sleeving and make electrical connections as follows:

- Connect supply live to fitting live (marked "L") on the terminal block.
- Connect supply neutral to fitting neutral (marked "N") on the terminal block.
- Connect the supply earth to the earth (marked " $\frac{1}{\text{I}}$ ") on the terminal block.

NOTE: Ensure electrical connections are tight and no loose strands of wire are left out of the connector block. Ensure terminals and rubber sleeve are correctly seated then close connector block housing. Excess cable must be carefully located inside ceiling cup or within the ceiling void.



Step 3
Carefully offer fitting over the mounting hook taking care not to trap the wiring in the process. Slide the bell shaped ceiling cup up the stem to conceal the ceiling hook and wiring and secure in place by tightening the screw located at the side of the stem. Carefully remove the protective packaging surrounding the crystal dropper sets.
Fit the bulb, type and wattage as indicated on the fitting (bulb not supplied). **The wattage indicated must not be exceeded.**
Once installation is complete, the electricity may be restored at the fuse box.