

3 Tier Glass Shelf

Thank you for purchasing this product. Please read the instructions and warnings carefully beforehand to ensure safe and satisfactory use of this product. It is recommended that this product is only fitted by persons competent in DIY, if in doubt consult a qualified person.

Warnings

In order to prevent overturning this product must be used with the wall attachment device provided. Serious or fatal crushing injuries can occur from furniture tipping over.

Do not place very hot or very cold items onto the glass surface unless adequate insulation material is used.

Do not sit or stand on glass surfaces.

Care and safety

Check that all assembly fittings are tight on a regular basis.

This product contains a 5mm thick toughened glass shelf. The load on the shelf should be evenly distributed (Max 5kg recommended)

If glass component is chipped or broken it should be replaced.

Please contact John Lewis with regard to obtaining replacement, quoting the product name.

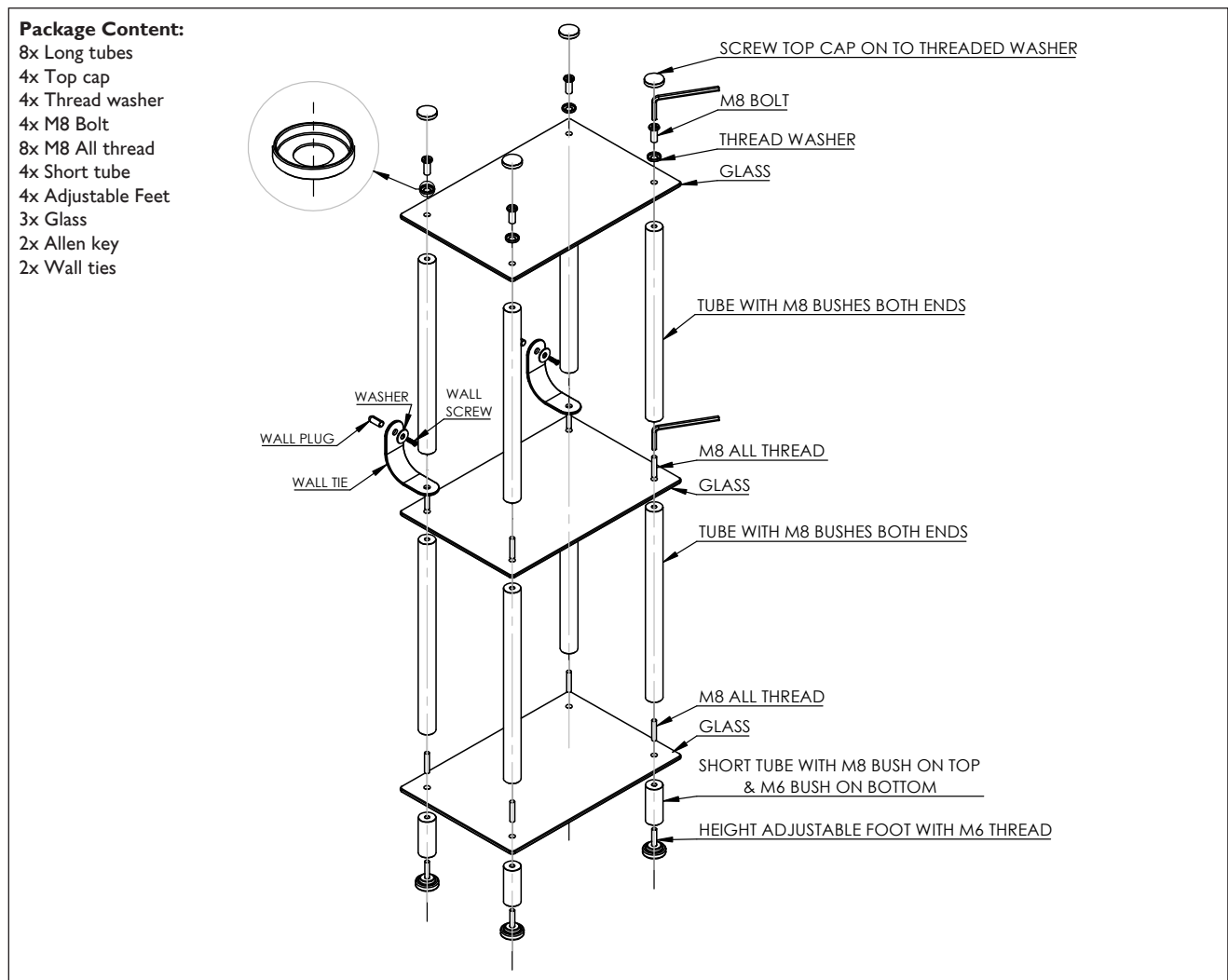
Practical advice

Clean with mild soapy solution and wipe off with a dry cloth.

Cleaning products may contain chemicals which can have a corrosive effect.

Weight should be distributed accordingly with heaviest items on the bottom shelf for stability.

Please retain this information leaflet for future reference.



Material composition: Stainless Steel / Plastic / Brass / Toughened Glass.

GT03-RTL - 121020

Warnings

- ⚠ Keep small parts out of reach of children.
- ⚠ Ensure the product is fully assembled as illustrated before use.

Dos

- ✓ Check the pack and make sure you have all the parts listed.
- ✓ Check all screws or bolts are tightened and inspect regularly.

Don'ts

- ✗ Do not over tighten screws or bolts.
- ✗ Do not use power tools to construct as over tightening may occur.

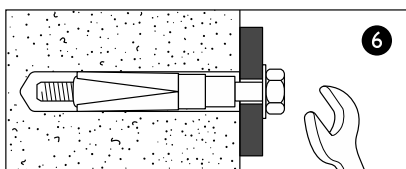
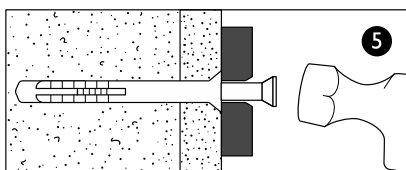
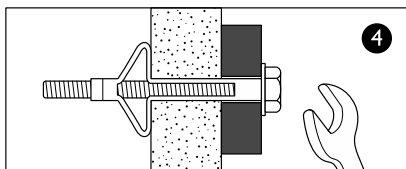
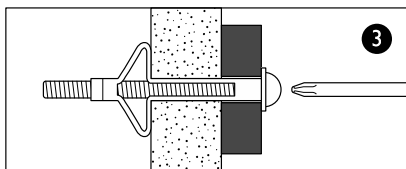
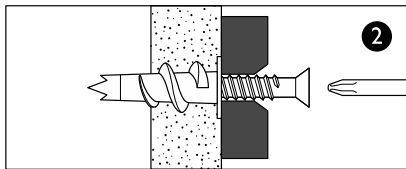
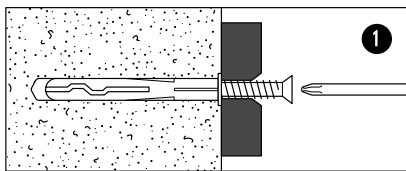


Warning - A guide to wall mounting and fixings

Different wall materials require different types of screws / fixings. Please ensure you use the correct screws / fixings for your type of walls and **seek professional advice if you are not sure.**

Failure of the product due to incorrect fixings is the responsibility of the installer.

Important: When drilling into the walls always check that there are no hidden wires or pipes etc.



Types of walls

You can use one of the following types of wall plug if your walls are made of brick, breezeblock, concrete, stone or wood.

1. General Purpose wall plug

Generally aerated blocks should not be used to support heavy loads, use a specialist fitting in this case. For light loads, general - purpose wall plugs can be used.

2. Plasterboard wall plug

For use when attaching light loads on to plasterboard partitions.

3. Cavity Fixing wall plug

For use with plasterboard partitions or hollow wooden doors.

4. Cavity Fixing – Heavy Duty wall plug

For use when fitting or supporting heavy loads such as shelving, wall cabinets and coat racks.

5. Hammer Fixing wall plug

For use with walls stuck with plasterboard. The hammer fixing allows it to be fixed to the wall rather than the plasterboard. Always check the fixing is secure to the retaining wall.

6. Shield Anchor wall plug – Heavy loads

For use with heavier loads such as TV and Hi-Fi speakers and satellite dishes etc.



Care and maintenance

Safety: Periodically check all fittings and wall fixings to ensure they have not come loose and retighten as necessary.