


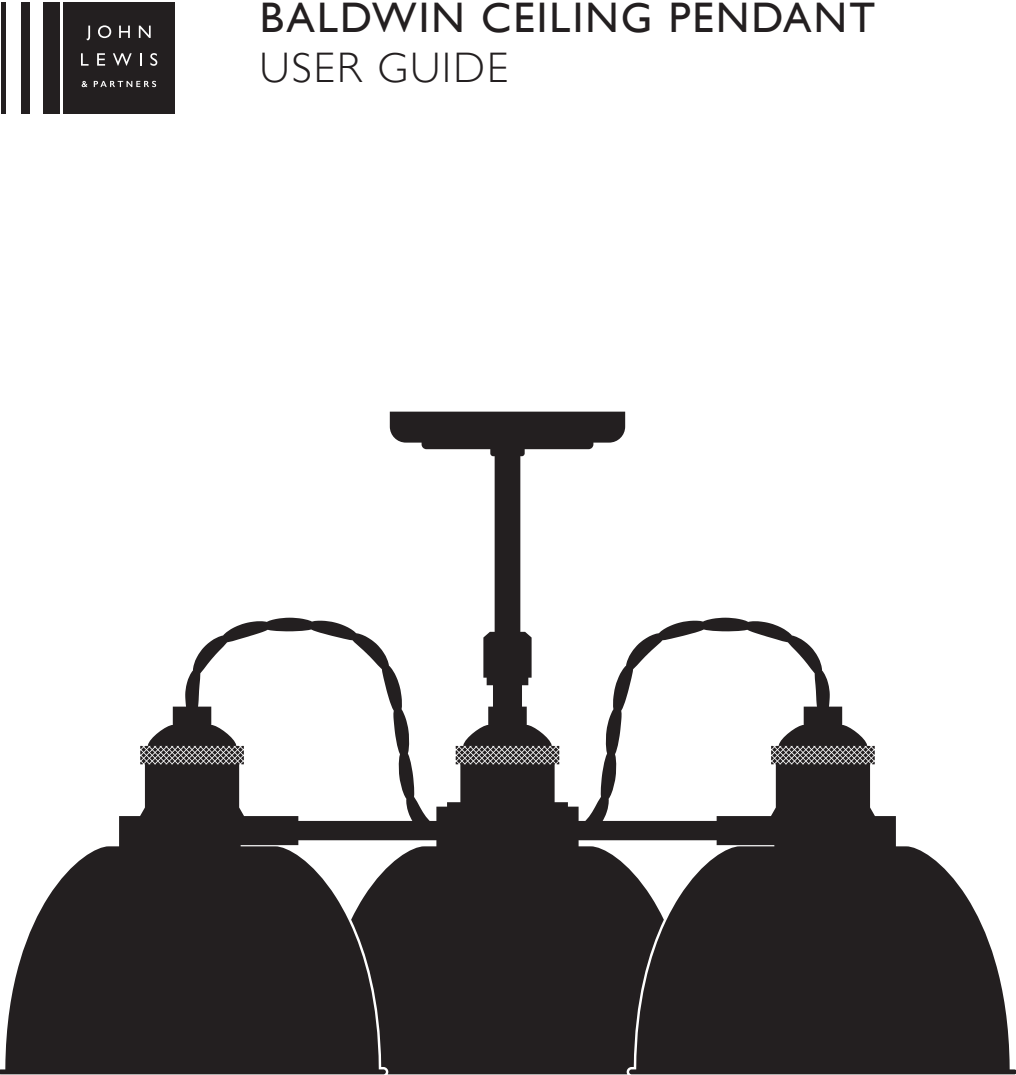
Product information	<ul style="list-style-type: none"> <li>Indoor use only</li> <li>Dimmable - When used with dimmable bulbs</li> <li>Replacement bulbs should be the same type and rating, available from John Lewis Partners or other established brands</li> <li>Clean the fitting with a soft dry cloth. Do not use abrasive chemical cleaners as this will damage the finish</li> </ul>
---------------------	--

Aftercare and Troubleshooting	<p><b>You've switched on the light, but it's not working:</b></p> <ol style="list-style-type: none"> <li>1. Check your power supply is switched on</li> <li>2. Turn off the light and check that the bulb is inserted correctly</li> <li>3. Check the bulb is still in working order</li> </ol> <p>If there are technical issues with this product that you can't solve, please contact your nearest John Lewis &amp; Partners shop or call Technical Support on 03301 230106.</p>
-------------------------------	--

Specification	<p>Max power: 6W</p> <p>Recommended bulb:</p> <p>3 x 6W E14 Golf LED bulb for maximum brightness.</p> <p>Lower wattages are also available.</p> <p>Rated input: 220 –240V, 50Hz</p> <p>Bulbs not included</p> <p>IP rating: 20</p> <p>Weight: 1.6kg</p>
---------------	---

5-year guarantee	<p>At John Lewis &amp; Partners we test every light to high quality standards. That means we can offer you a 5-year guarantee.</p>
------------------	--

Recycling	<p>This symbol  indicates that this product should not be treated as normal household waste and it should be recycled. John Lewis &amp; Partners do not operate instore take back, but as members of the Distributor Take Back scheme have funded the development and upgrade of recycling facilities across the UK. Please take it to your nearest collection facility or for further details contact your local council or visit <a href="http://www.recycle-more.co.uk">www.recycle-more.co.uk</a>.</p>
-----------	--



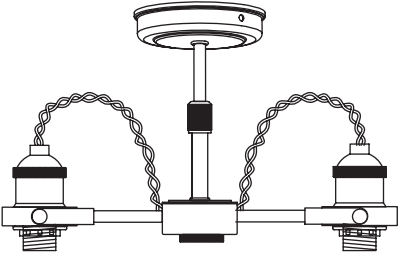
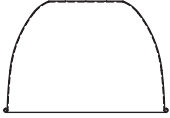



**Getting started**

Thank you for purchasing this John Lewis & Partners product. For your safety, and to make sure everything is working properly, please read the instructions carefully before use.

**Warnings**

This is a Class 1 product and must be earthed.  
It is recommended that this fitting is installed by a qualified electrician.  
Install in accordance with the IEE Wiring regulations and the Building Regulations.  
To prevent electrocution switch off at mains supply before installing or maintaining this fitting. Ensure other persons cannot restore the electrical supply without your knowledge.  
If you are in any doubt, please consult a qualified electrician.  
This light fitting should be connected to a 5 amp fused circuit.  
If replacing an existing fitting, make a note of the connections.  
Always use the correct type and wattage bulb. Never exceed the wattage stated.  
When changing a bulb always switch off at the mains and allow to cool down.  
Dispose of used bulbs carefully.  
This product is suitable for installation on surfaces with normal flammability e.g. wood, plasterboard, masonry. It is not suitable for use on highly flammable surfaces (e.g. polystyrene, textiles).  
For your safety, always switch off the supply and allow the fitting to cool down before changing lightbulbs, cleaning, removing shades or adjusting the light's position.

Parts list

Description	Image	Quantity
Light fitting with x 3 shade rings (fitted)		x 1
Shades		x 3
Hex key		x 1
Wall plugs		x 2
Screws		x 2

**Product assembly**

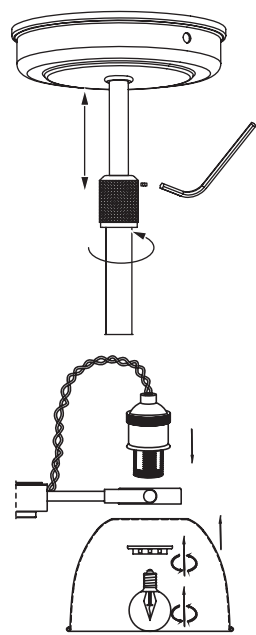
**Step 1**  
Refer to assembly diagrams right. Carefully unpack the carton, making sure all the parts are present before assembly. Before removing the existing fitting, carefully note the position of each set of wires.

**Step 2**  
The height of the product can be adjusted by twisting the cuff on the stem, withdrawing the inner stem to the appropriate height. Re-tighten the cuff and use the grub screw and hex key to secure.

**Take care not to rotate the stem during installation or use to prevent damage to the internal cables.**

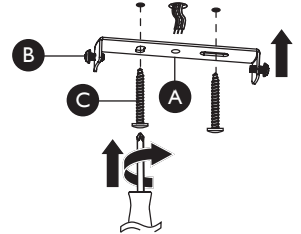
**Step 3**  
Place the lampholders through the fitting arms, then place the shades over the lampholders, and secure with the shade rings.

Fit the recommended bulbs.

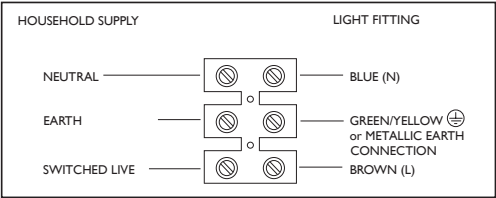


**Step 4**  
Remove the fixing bracket (A) from the ceiling cover by removing the side screws (B).

Attach the fixing bracket to the ceiling using the screws (C) provided. Ensure there is a joist at the point of fixing to support the weight of the product. Take care to avoid damaging any concealed wiring and pipes.



**Step 5**  
Having identified the household wiring from your existing light fitting, connect to the connection block inside the product in the following way.  
Check that:  
You have correctly identified the house wires.  
The connections are tight.  
No loose strands have been left out of the connection block.



**Step 6**  
Attach the product to the fixing bracket (A), by locating the screws (B) in the bracket into the holes in the ceiling cover and tightening the screws to secure. Take care not to trap any wiring.

Replace fuse or circuit breaker and switch on.  
Your light is now ready for use.

