

## Recommended bulb

2 x 3-4 Watt SES energy efficient LED CNDL

or

2 x 28 Watt SES eco halogen CNDL

Bulb not included

## Specification

Max power: 28W


Voltage: 220~240V, 50Hz

IP20

Weight 2.4Kg



Please retain these instructions for future reference.

This symbol  indicates that this product should not be treated as normal house-hold waste and it should be recycled. John Lewis does not operate in store take back, but as members of the Distributer Take Back scheme have funded the development and upgrade of recycling facilities across the UK. Please take it to your nearest collection facility or for further details contact your local council or visit [www.recycle-more.co.uk](http://www.recycle-more.co.uk).

We have taken great care to ensure that this product reaches you in perfect condition. However, should any parts be damaged or missing please e-mail [lightingparts@JLPspares.co.uk](mailto:lightingparts@JLPspares.co.uk)

## Trouble shooting:

Why is the light not working when switched on?

Check your power supply is switched on

Turn off light and check that the bulb is inserted correctly

Check the bulb is still in working order.

John Lewis partnership

171 Victoria Street

London SW1E 5NN

[Johnlewis.com](http://Johnlewis.com)

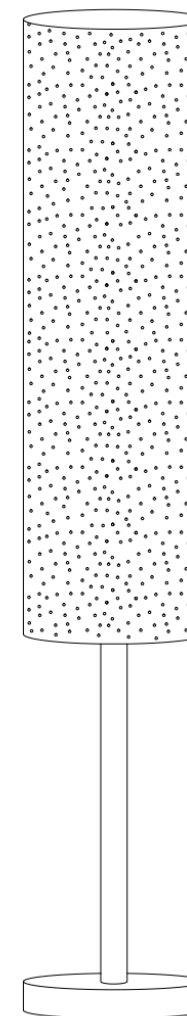
Made in China

Issue 2 05/18

# John Lewis

## User manual

### ALICE PIERCED SHADE FLOOR



Thank you for purchasing this Alice pierced shade floor lamp. Please read the instructions carefully before use to ensure safe and satisfactory operations of this product.  
Please keep this instruction for future reference.




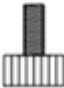

Warnings!

The supply cable runs through the inside of this product. Take care not to place undue stress on the cable whilst unpacking to prevent the possibility of a poor connection.  
If you are in any doubt consult a person competent to give advice on the assembly of electrical equipment.  
If the external flexible cable of the lamp is damaged it shall be exclusively replaced by the manufacturer or his service agent or a similar qualified person in order to avoid a hazard.  
To prevent electrocution switch off at the mains supply before assembling or maintaining this fitting. Ensure the plug is not connected to any power supply and read instructions before assembly.  
Always be sure to use the correct type and wattage of bulbs as indicated on the fitting. Never exceed the wattage stated.  
When changing the bulb, always switch off at the mains and allow the old bulb to cool down before handling. Dispose of used bulbs carefully.  
**Caution! The bulb and surrounding parts can become hot during use.**  
For indoor use only.

Care instructions

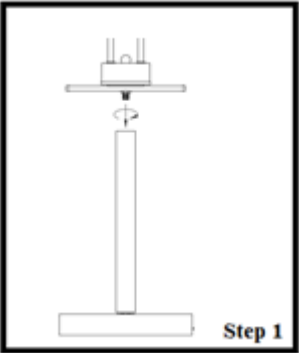
We recommend cleaning with a soft dry cloth. Do not use abrasive materials as these will damage the finish.  
Replace bulbs from John Lewis or established brand of the same type and compatibility.

Parts list

Parts list			Qty	Parts list			Qty	Parts list			Qty
A		1	C		2	E		1			
			D		3						
B		1									

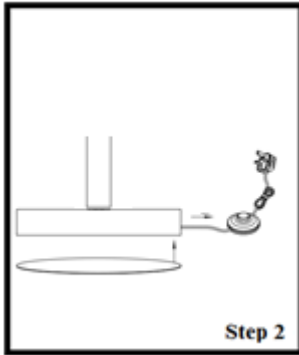
Assembly

Never assembly your appliance on a wet, freshly painted surface. Ensure to switch off at the mains supply before assembling or maintaining this fitting.



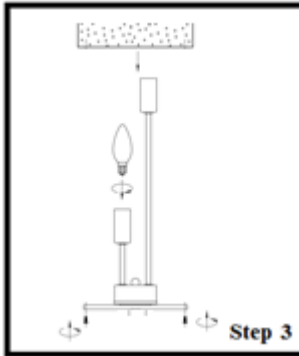
Step 1

Unpack the product and remove all packaging. Be careful not to scratch the surface of the product whilst removing the wrapping.  
Lay the product out on the floor. If the floor is not carpeted please cover it with a soft cloth to avoid damage to the flooring and surface of the product. Assembly should take place with the product lying flat. Screw the lower pole onto the upper lamp holder section ensuring that the lamp holder section is kept still and that the pole is threaded on ensuring that the cable does not twist.



Step 2

Gently pull any excess supply cable through the small hole in the base until it meets the pole assembly. Place the self-adhesive protective pad to the bottom of the base.  
**Note:** Peel the cover from the protective base pad and apply evenly.  
Stand the floor lamp upright and ensure all the assembled parts are fully tightened.



Step 3

**To fit shade:** Lower the shade over the lampholder section and align the screw holes at the base of the shade with those in the frame just below the lamp holder. Insert the three thumb screws through the underside of the lamp holder frame section and into the threaded holes in the lower frame and tighten screws to secure in place.  
**Fit the bulb,** type and wattage as indicated on the fitting (bulb not supplied). The wattage indicated must not be exceeded.  
Floor lamp is now ready for use.