

### Recommended bulb

1 x 6-9W ES energy efficient LED classic bulb

or

1 x 42W ES eco halogen classic bulb

Bulb not included

### Specifications


Max. power: 60W

Voltage: 220-240V~50/60Hz

Weight: 2.1kg



Please retain these instructions for future reference.

This symbol  indicates that this product should not be treated as normal household waste and it should be recycled. John Lewis do not operate instore take back, but as members of the Distributor Take Back scheme have funded the development and upgrade of recycling facilities across the UK. Please take it to your nearest collection facility or for further details contact your local council or visit [www.recycle-more.co.uk](http://www.recycle-more.co.uk).

We have taken great care to ensure that this product reaches you in perfect condition. However, should any parts be damaged or missing please e-mail [lightingparts@JLPspares.co.uk](mailto:lightingparts@JLPspares.co.uk)

### Trouble shooting:

Why is the light not working when switched on?

Check your power supply is switched on.

Turn off light and check that the bulb is inserted correctly.

John Lewis Partnership  
171 Victoria Street  
London SW1E 5NN  
[johnlewis.com](http://johnlewis.com)

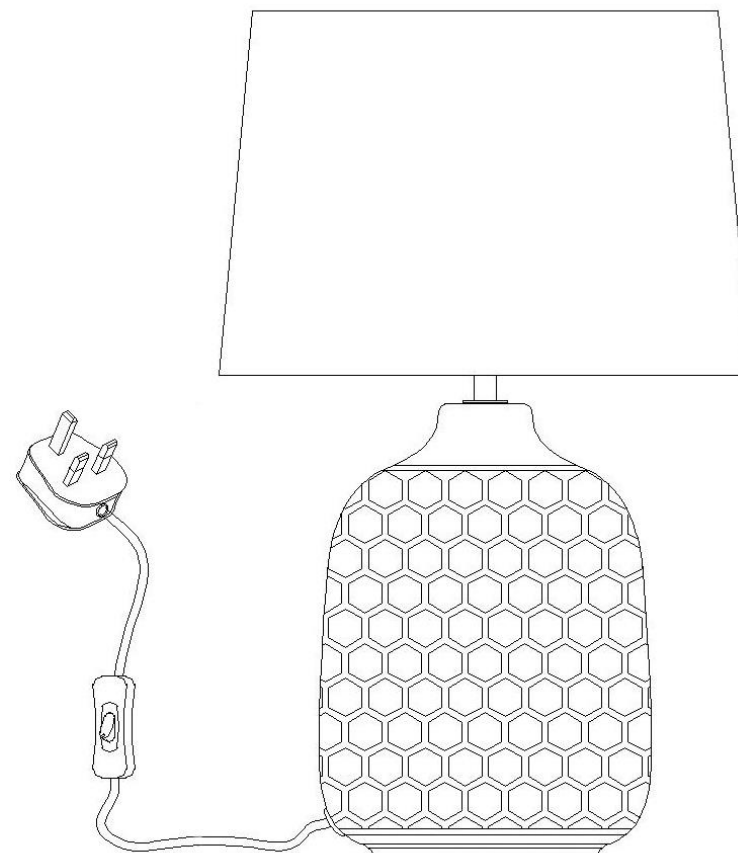
Made in China

John Lewis

## User manual

Natalie velvet blue/ grey

Table lamp



Thank you for purchasing this Natalie table lamp.  
Please read the instructions carefully before use to ensure safe and satisfactory operation of this product.  
Please keep these instructions for future reference.

Warnings!

This fitting should be fitted in accordance with IEE Regulations and the Building Regulations. If in any doubt, or where required by law, consult a competent person who is registered with an electrical self-certification scheme. Further information is available online or from your Local Authority.

To prevent electric shock switch off at the mains supply before installing or maintaining this fitting. Ensure other persons cannot restore the electricity supply without your knowledge.

If you are in any doubt, please consult a qualified electrician.

Always use the correct type and wattage bulb. Never exceed the wattage stated.

**Caution! The bulb and surrounding parts can become hot during use.**

Do not cover. Keep away from curtains, bedding etc.

Always route mains cable so it does not present a hazard (entrapment, tripping etc.); ensure that there are no twists or snags in the cable.

Plug into the mains supply; switch on using the inline cord switch provided.

If moving this lamp, always carry by holding the stand part (and not the bubble glass.)

**Important! If the external flexible cable or cord of this table lamp is damaged, it shall be exclusively changed by the manufacturer, their service agent or a similarly qualified person.**




Care Instructions

We recommend cleaning with a soft dry cloth.

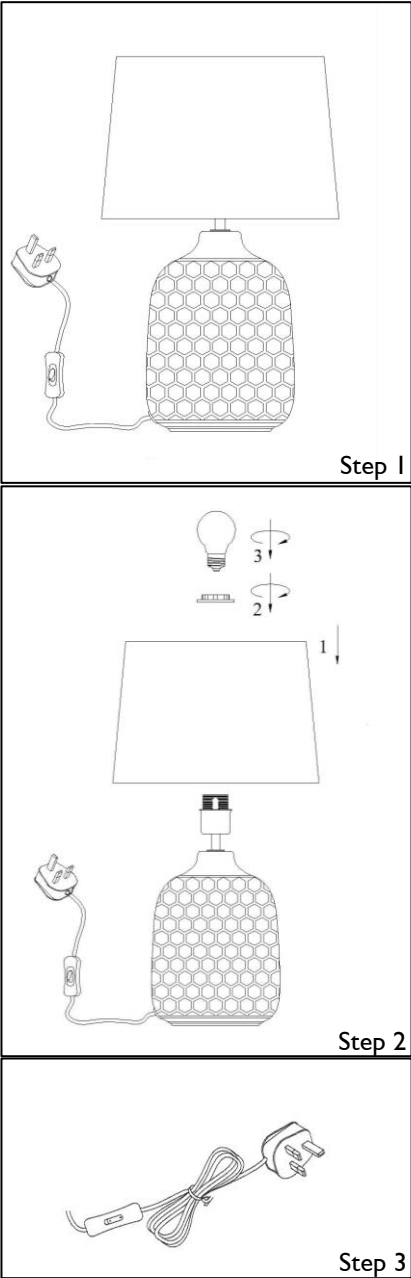
Do not use abrasive materials as these will damage the finish.

Replace bulbs from John Lewis or established brand of the same type and compatibility.

Indoors use only.

Parts list		
		Qty
A		1
B		1
C		1

Assembly



- Step 1
- Carefully unpack the carton, making sure all parts are present before assembly.  
Place lamp on a flat surface
- Step 2
- Attach the correct type and wattage bulb to the lamp holder (bulb not included).  
The maximum power indicated must not be exceeded.
- Step 3
- Switch on the electricity supply at the fuse board. Insert the plug into the power supply and turn on the switch.