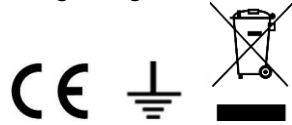


Recommended LED Light source


1 x 42 W energy efficient LED
2520 Lumens, 3000 Kelvins
LED non-replaceable

Specifications

Max. power: 42W
Voltage: 220-240V~50/60Hz
IP rating: 20
Weight: 3kg



Please retain these instructions for future reference.

This symbol  indicates that this product should not be treated as normal household waste and it should be recycled. John Lewis do not operate instore take back, but as members of the Distributor Take Back scheme have funded the development and upgrade of recycling facilities across the UK. Please take it to your nearest collection facility or for further details contact your local council or visit www.recycle-more.co.uk.

We have taken great care to ensure that this product reaches you in perfect condition. However, should any parts be damaged or missing please e-mail lightingparts@JLPspares.co.uk

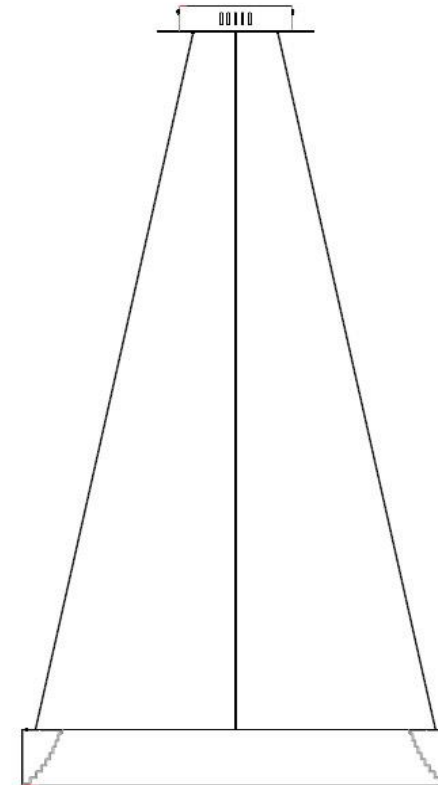
Trouble shooting:

Why is the light not working when switched on?
Check your power supply is switched on

John Lewis User manual

Leif 60cm

Ceiling pendant



John Lewis Partnership
171 Victoria Street
London SW1E 5NN
Johnlewis.com

Made in China

Thank you for purchasing this Leif aluminum pendant light. Please read the instructions carefully before use to ensure safe and satisfactory operation of this product. Please keep these instructions for future reference

Warnings!

This product is Class I and must be earthed.





This fitting should be fitted in accordance with IEE Regulations and the Building Regulations. If in any doubt, or where required by law, consult a competent person who is registered with an electrical self-certification scheme. Further information is available online or from your Local Authority. To prevent electric shock, switch off at the mains supply before installing or maintaining this fitting. Ensure other persons cannot restore the electricity supply without your knowledge.

If you are in any doubt, please consult a qualified electrician.

If replacing an existing fitting, make a note of the connections.

Caution! The LED Model and surrounding parts can become hot during use.

Parts list

	Parts list	Qty		Parts list	Qty
A		2	C		1
B		2	D		1

Care instructions

We recommend cleaning with a soft dry cloth. Do not use abrasive materials as these will damage the finish.

Indoor use only.

Replace bulbs from John Lewis or established brand of the same type and compatibility

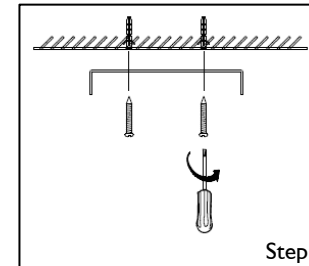
For non-user replaceable light sources:

“The light source contained in this luminaire shall only be replaced by the manufacturer, his service agent or a similar qualified person”

Caution, risk of electric shock  (Source: IEC 60417-6042 (2011-11))

Assembly

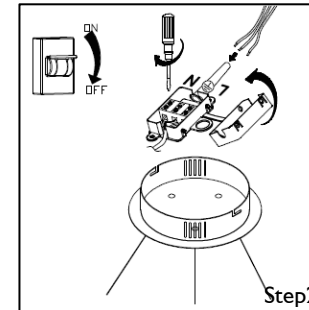
Ensure the mains electricity supply switched off at the fuse board



Step 1

Step 1

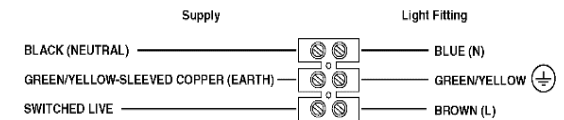
Ensure that the bracket (supplied) is fixed to a wooden joist, or use a suitable fixing to the ceiling which will support the weight of the fitting.



Step 2

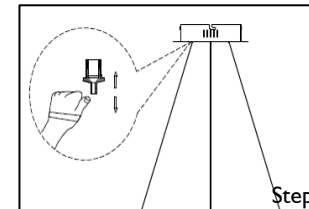
Step 2

Connect cables or terminals as shown below.



Check all wires are tight in the terminal block and no loose strands are left out.

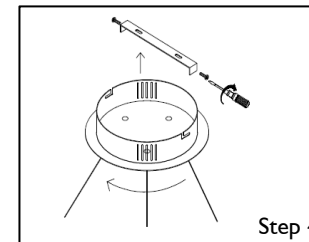
Cover with insulating tape (not included)



Step 3

Step 3

To adjust the height, press centre of the fitting; this will allow the cable to move up and down to the required height.



Step 4

Step 4

Push up ceiling cup and secure with metal grub screws.

Switch on the electricity supply at the fuse board.

The maximum power indicated must not be exceeded.