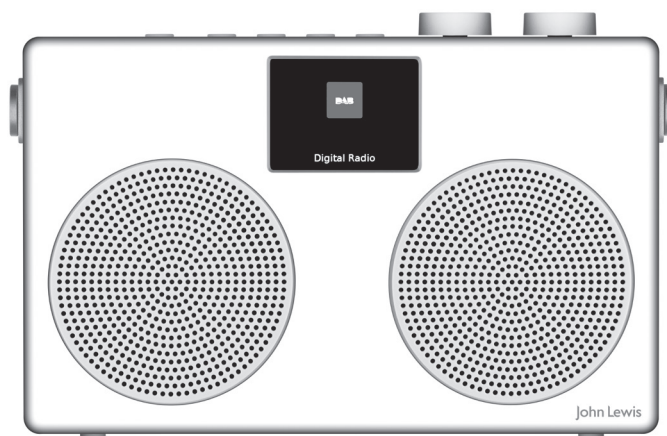


John Lewis

# Instruction manual

## Spectrum Duo

### DAB/FM digital radio



## Contents

3	Important safety information
4	Your DAB/FM radio
4	Packing list
5	3 Steps guide to getting started
6	Basic Operation
8	Store stations
9	Recall Preset stations
9	Slide show (DAB mode only)
10	Info
11	Bluetooth speaker
12	Pairing Bluetooth by NFC
12	Disconnect Bluetooth
13	AUX IN
14	Advance setting
14	DAB mode
15	Manual Tune
15	Prune Invalid
15	DRC
16	System Settings
21	Troubleshooting
21	Error messages
21	Specifications
22	Changing the batteries
23	Service
23	Guarantee

## Important safety information

Thank you for purchasing this John Lewis DAB/FM radio.

Hereby, John Lewis declares that the radio equipment type Spectrum duo radio is in compliance with Directive 2014/53/EU. The full text of the EU declaration of conformity is available at the following internet address: <https://www.johnlewis.com/content/declaration-of-conformity>

Please read the instructions and warnings carefully before use, to ensure safe and satisfactory operation of this product.

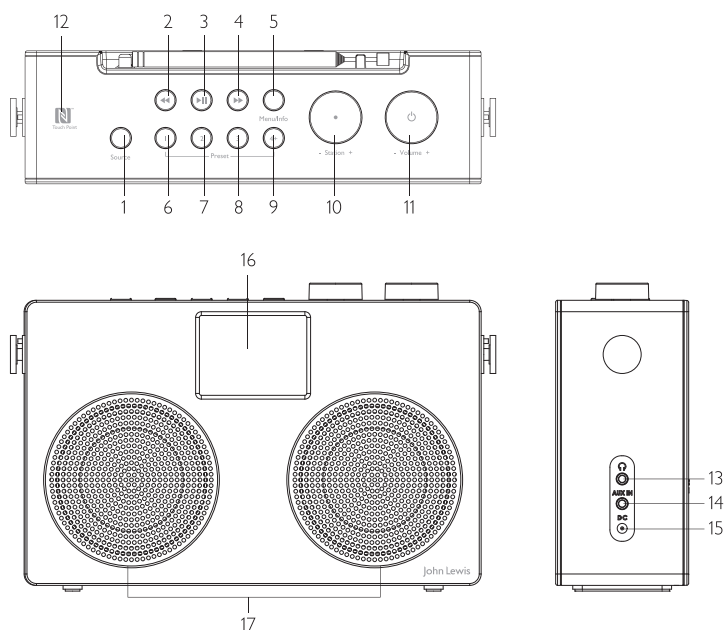
It is most important this instruction leaflet be retained with the product for future reference. These warnings have been provided in the interest of safety. You **MUST** read them carefully before using the appliance. If you are unsure of the meanings of these warnings contact the John Lewis store from which you purchased the appliance.

- This appliance is not intended for use by persons (including children) with reduced physical, sensory or mental capabilities, or lack of experience and knowledge, unless they have been given supervision or instruction concerning use of the appliance by a person responsible for their safety.
- To protect against fire, electric shock and injury to persons **DO NOT IMMERSE** CORD, plug or base unit in water or other liquids.
- Unplug from the mains when not in use, before putting on or taking off parts and before cleaning.
- Do not operate any appliance with a damaged cord or plug, or after the appliance malfunctions or has been damaged in any manner. Return the appliance to the nearest John Lewis store.
- Do not let power cord hang over edge of table or counter, or touch hot surfaces.
- In the event of a fault, contact your nearest John Lewis store. No repair should be attempted by the consumer.
- Do not use the appliance for anything other than intended use.
- For household use only.
- Do not use outdoors.
- Save these instructions for future reference.

**WARNING!** Polythene bags over the product or packaging may be dangerous. To avoid danger of suffocation, keep away from babies and children.

## Your DAB/FM radio

1	Source	11	Volume/Power
2	Backward	12	NFC sensor position
3	Play/Pause	13	Headphone socket
4	Forward	14	AUX in
5	Menu/Info	15	DC jack
6-8	Preset 1-3	16	LCD
9	Preset 4+	17	Speakers
10	Station/Enter		

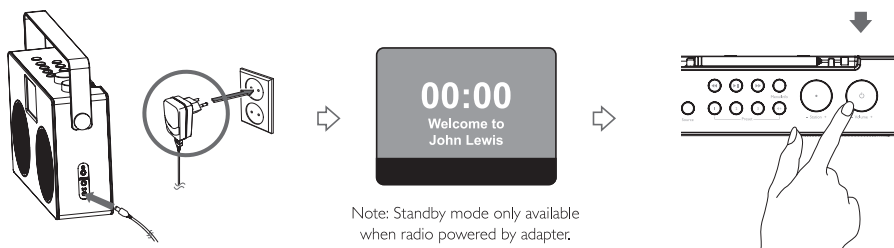


## Packing list

- 1 DAB/FM digital radio x 1
- 2 Power adapter x 1
- 3 Instruction manual x 1

### 3 Steps guide to getting started

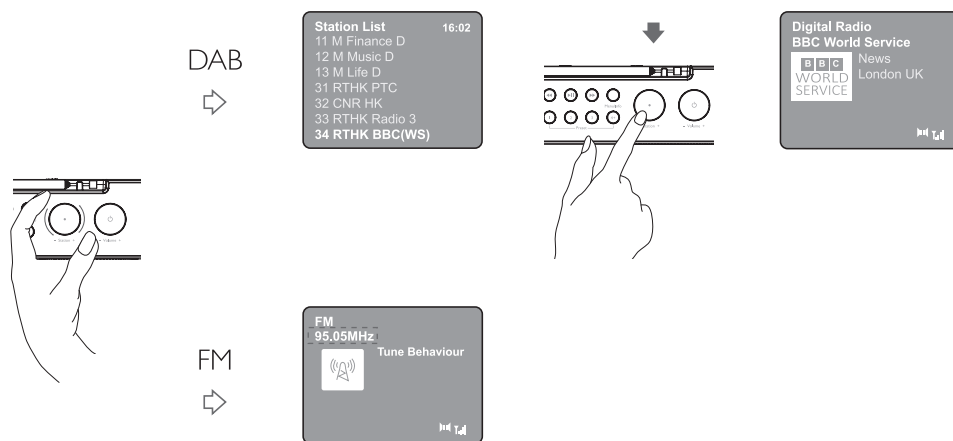
#### 1. Switch on the radio



#### 2. Select station mode



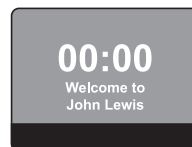
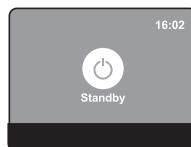
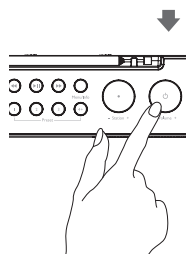
#### 3. Select station



Note: 0.05MHz step

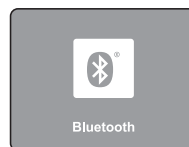
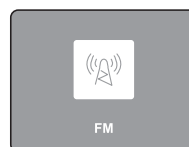
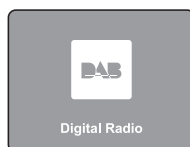
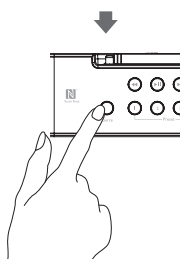
## Basic Operation

### Standby mode

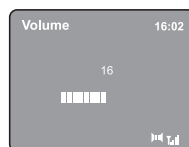
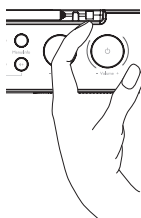


Note: Standby mode only available when radio powered by adapter.

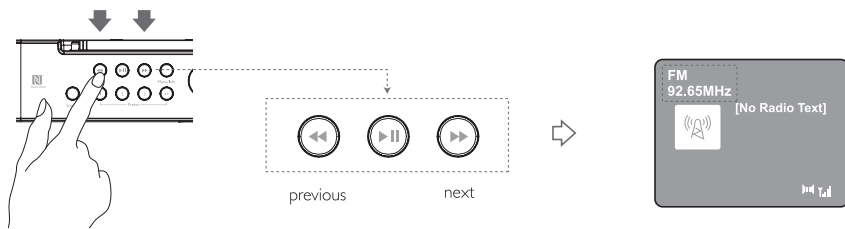
### Mode change



### Volume control



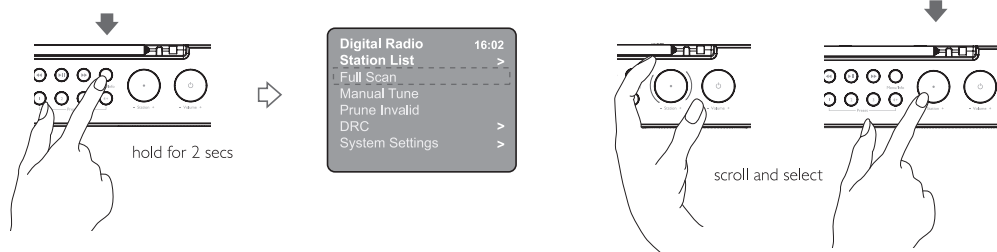
## Auto scan (FM)



press and release after 3 secs

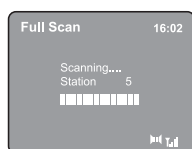
auto scan for previous or next station

## Auto scan (DAB)



hold for 2 secs

scroll and select

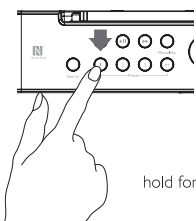


# Store stations

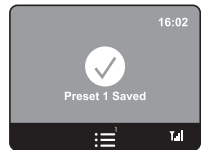
To store Preset 1 - 3



select the station you wish to preset



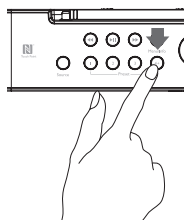
hold for 2 secs



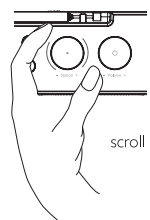
To store Preset 4 - 10



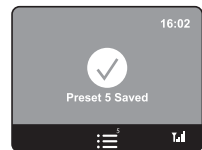
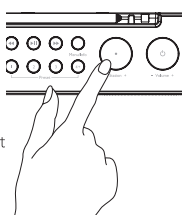
select the station you wish to preset



hold for 2 secs

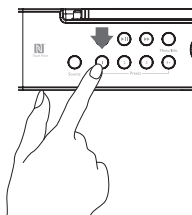


scroll and select

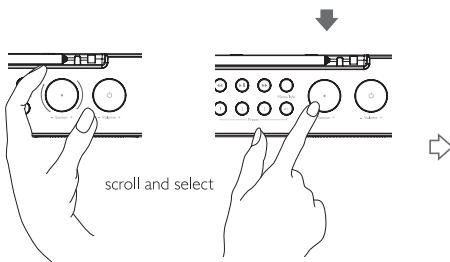
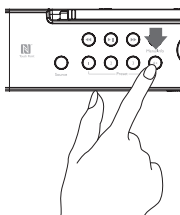


## Recall Preset stations

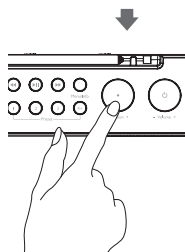
To recall Preset 1 - 3



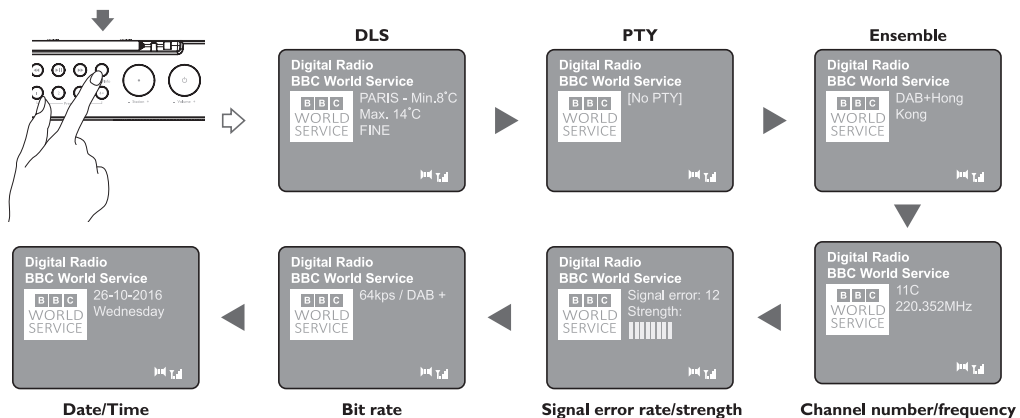
To recall Preset 4 - 10



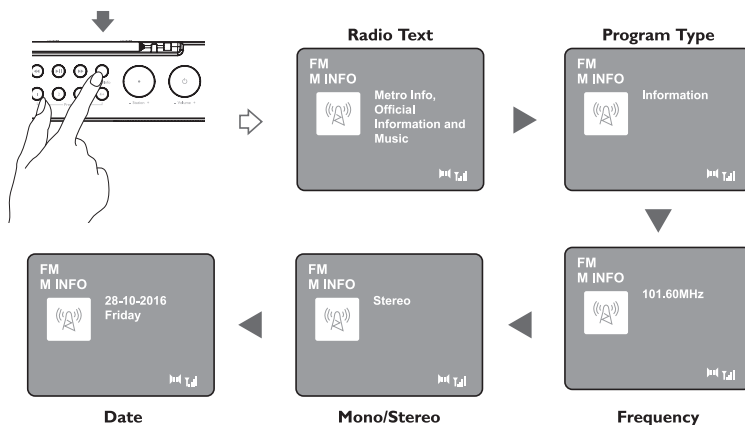
## Slide show (DAB mode only)



## Info (DAB Mode)

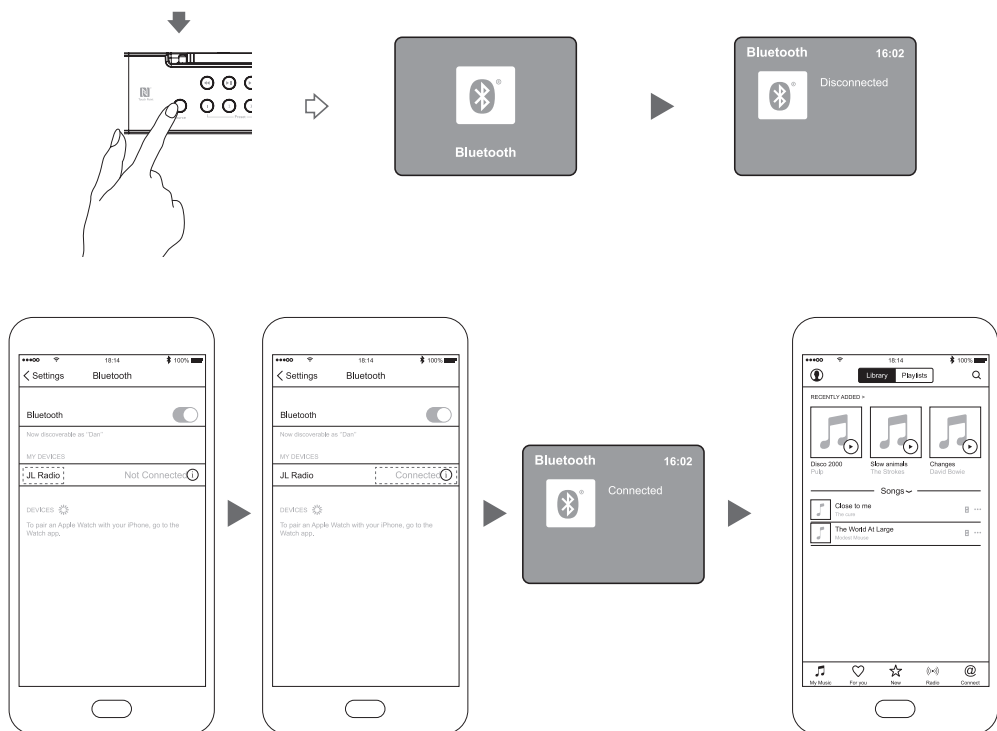


## Info (FM Mode)



## Bluetooth speaker

### Pairing Bluetooth



Turn on Bluetooth in your devices and select "JL Radio".

Select songs from the devices.



previous

play/pause

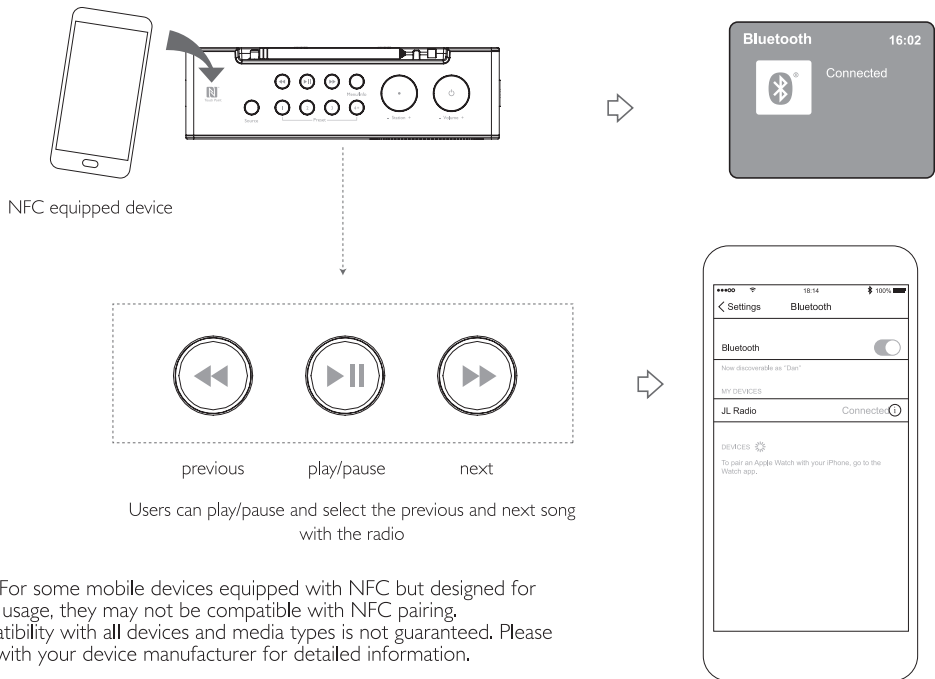
next

Users can play/pause and select the previous and next song with the radio

**Note:** Bluetooth connectivity performance may vary with brand and model of the connected device. Using latest firmware for the device may get the best connection performance. Compatibility with all devices and media types is not guaranteed. The presence of other functioning Bluetooth devices during connection may lead to operational difficulties. The Bluetooth transmitter and receiver hardware in this unit has an approximate operational range of 30 feet in open space.

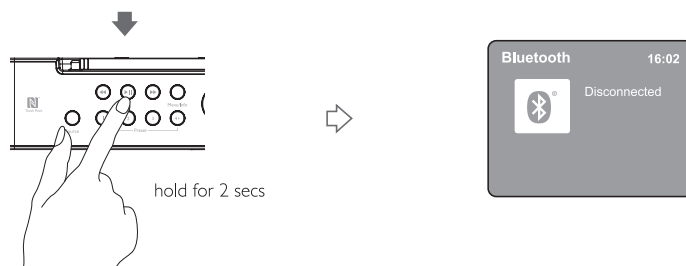
Generally Bluetooth devices can communicate with each other clearly within a regular sized room or office. Operation between different rooms will depend on the construction of the room. It is important to recognise the fact that Bluetooth communication range may be substantially reduced if the signal passes through a solid object. Human bodies, brick and concrete walls, and heavy furniture or bookcases will reduce the operational range of your Bluetooth device. Glass, dry-wall or wood panelled walls and office partitions may have a less severe but noticeable effect. You should position your Bluetooth devices closer to each other if you observe communication difficulties.

## Pairing Bluetooth by NFC

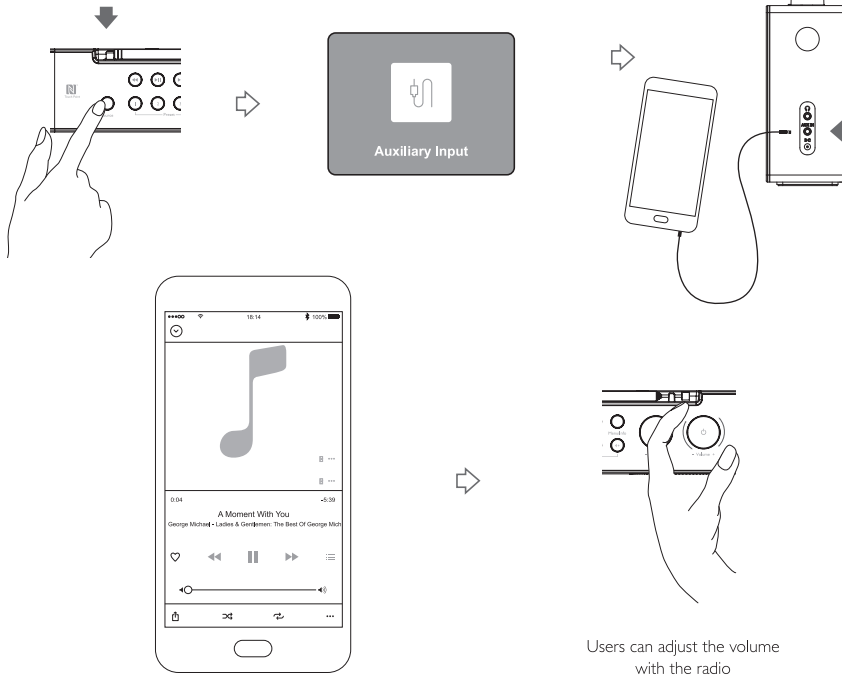


**Note:** For some mobile devices equipped with NFC but designed for special usage, they may not be compatible with NFC pairing. Compatibility with all devices and media types is not guaranteed. Please check with your device manufacturer for detailed information.

## Disconnect Bluetooth



## AUX IN



### **Advance setting**

The Advance settings allow you to tailor the DAB/FM radio with a variety of options to suit you. Press and hold the “MENU/INFO” button for 2 seconds to enter advance settings.

### **DAB mode**

Under the advance setting menu, rotate and press the “STATION/ENTER” knob to select an option through the menu. The advance settings menu options are:

- Station List
- Full Scan
- Manual Tune
- Prune Invalid
- DRC
- System Settings

### **Station list**

Rotate and press the “STATION/ENTER” knob to select “Station List” in the list of options. Rotate and press the “STATION/ENTER” again to select and confirm change of radio station.

### **Full scan**

Rotate and press the “STATION/ENTER” knob to select “Full Scan” in the list of options, then full scan starts automatically. Once a scan is completed, the radio returns to play the previously selected station or first station on the list.

**Note:** If no station is found, it shows “NO DAB STATION”. For a better reception, extend the antenna or do the full scan again in another place.

### **Manual tune**

As well as the normal method of scanning, you can also manually tune to a particular channel/frequency. This can be useful for adjusting your antenna to achieve the best possible reception and scanning a particular channel to update the station list.

Rotate and press the “STATION/ENTER” knob to select “Manual Tune” in the list of options. Rotate and press the “STATION/ENTER” knob again to select and confirm change to a particular channel/frequency.

The display shows a live indication of the received signal strength on the selected frequency. Adjustments to your antenna will affect the received signal strength displayed.

### **Prune invalid** (remove stations that are listed but unavailable)

This removes all invalid stations indicated in the station list with a ‘?’ in front of the station name.

Rotate and press the “STATION/ENTER” knob to select “Prune Invalid” in the list of options. Rotate and press the “STATION/ENTER” knob to select <Yes> so that confirm the remove of invalid station.

### **DRC** (Dynamic Range Compression)

This function reduces the difference between the loudest and quietest audio being broadcast. Effectively, this makes quiet sounds comparatively louder and loud sounds comparatively quieter.

Rotate and press the “STATION/ENTER” knob to select “DRC” in the list of options. Rotate and press the “STATION/ENTER” knob again to select confirm the change of setting.

### **System settings** (Same as in FM/AUX/Bluetooth mode)

The system settings menu options are:

- Time/Date
- Backlight
- Language
- Factory Reset
- Software Version

#### **Set time/date**

Under the system settings menu, rotate and press the “STATION/ENTER” knob to select “Time/Date” in the list of option.

Rotate and press the “STATION/ENTER” knob to select “Set Time/Date” in the list of options. Then set the date, month, year, hour, minute accordingly by rotating and press the “STATION/ENTER” knob. Once finished it will show “TIME SAVED”.

#### **Auto update**

Under the system settings menu, rotate and press the “STATION/ENTER” knob to select “Time/Date” in the list of options.

Rotate and press the “STATION/ENTER” knob to select “AUTO UPDATE” in the list of options.

Rotate and press the “STATION/ENTER” knob again to select and confirm the change of update method.

### **Set 12/24 hour**

Under the system settings menu, rotate and press the “STATION/ENTER” knob to select “Time/Date” in the list of options.

Rotate and press the “STATION/ENTER” knob to select “SET 12/24 Hour” in the list of options.

Rotate and press the “STATION/ENTER” knob again to select and confirm the change of time format.

### **Set date format**

Under the system settings menu, rotate and press the “STATION/ENTER” knob to select “Time/Date” in the list of options.

Rotate and press the “STATION/ENTER” knob to select “SET Date Format” in the list of options.

Rotate and press the “STATION/ENTER” knob again to select and confirm the change of date format.

### **Backlight**

This radio display has a backlight with adjustable time-out (this is the time delay, in seconds, after which the display switches off).

Under the system settings menu, rotate and press the “STATION/ENTER” knob to select “Backlight” in the list of options.

Rotate and press the “STATION/ENTER” knob to select “Timeout” for the backlight. Rotate and press the “STATION/ENTER” knob again to select and confirm the change of backlight setting.

On Level

You can adjust the LCD brightness when the radio is on.

Options: High(default)/Medium/Low

Under the system settings menu, rotate and press the “STATION/ENTER” knob to select “Backlight” in the list of options.

Rotate and press the “STATION/ENTER” knob to select “On level” for the backlight. Rotate and press the “STATION/ENTER” knob again to select and confirm the change of brightness setting.

#### Dim Level

You can adjust the LCD brightness when you have set time out duration of backlight.

Under the system settings menu, rotate and press the “STATION/ENTER” knob to select “Backlight” in the list of options.

Rotate and press the “STATION/ENTER” knob to select “Dim level” for the backlight. Rotate and press the “STATION/ENTER” knob again to select and confirm the change of brightness setting.

### **Language**

Under the system settings menu, rotate and press the “STATION/ENTER” knob to select “Language” in the list of options.

Rotate and press “STATION/ENTER” knob again to select and confirm the change of language setting.

### **Factory reset**

A factory reset clears all user defined settings, replacing them with the original default values, so time/date, preferences/settings, DAB station list and preset stations are all lost.

Under the system settings menu, rotate and press the “STATION/ENTER” knob to select “Factory Reset” in the list of options. Rotate the “STATION/ENTER” knob to choose <Yes> and press once to start the factory reset.

### **Software version**

This is used to display the current software version.

Under the system settings menu, rotate and press the “STATION/ENTER” knob to select “Software Version” in the list of options. Then the current software version will be shown.

### **FM radio/AUX/Bluetooth mode**

Under the advance setting menu, rotate and press the “STATION/ENTER” knob to select an option through the menu.

The advance settings menu options are:

- Scan Setting (only available in FM mode)
- Audio Setting (only available in FM mode)
- System settings (Refer to the System settings instruction in DAB mode section)

### **Scan setting**

By default, FM scans stop at any available station (All stations). This may result in poor quality audio from weak stations.

Rotate and press the “STATION/ENTER” knob to select and confirm the change of particular option.

### **Audio setting**

By default, all stereo stations are reproduced in stereo. For weak stations, this may result in poor quality audio. The audio quality can be improved using mono.

Rotate and press the “STATION/ENTER” knob to select and confirm the change of particular option.

### **Switch on by battery**

Insert 4 × C size batteries and follow the polarity in the battery compartment, then press “VOLUME/POWER” once to switch on the radio.

**Note:** There is not standby mode during using the battery only.

## Troubleshooting

Problem: FM Hiss/DAB Burbling/intermittent cut-out/DAB  
No stations available message

Cause: Low signal strength

Solution: Check/move antenna. Move radio.  
Rescan local (high-strength) stations only.  
(For DAB, check local coverage at  
[www.ukdigitalradio.com/coverage](http://www.ukdigitalradio.com/coverage) then rescan  
stations).

## Error messages

'Service not available': No DAB reception.

'Signal error': The DAB signal has  
been interrupted.

'No DAB Station': The listed station cannot be found.  
(No Name): The current station  
does not broadcast an  
identity name.

'No stations found': No DAB stations are available,  
check aerial.

'No RadioText': No RDS text information is  
available on this station.

'No PTY': No RDS programme type  
information is available.

'No Name': No RDS station name is  
being broadcast.

## Specifications

Description: DAB+/FM Digital Radio

Speaker: 2 x 3W rms

Frequency ranges: FM: 87.5-108MHz;  
DAB/DAB+: Band III  
174.928-239.200MHz  
Bluetooth: 2.4GHz

LCD display: 2.8 inches colour TFT display

Power supply: DC power input: 4 x 1.5V  
C-size batteries

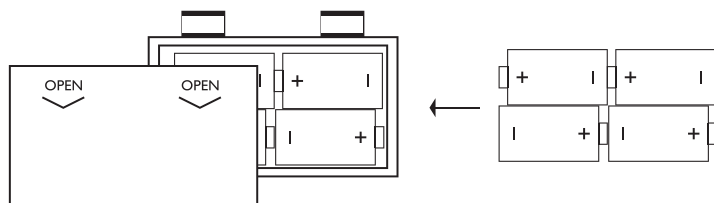
Power adapter: DC 5.5V 2A (please use our  
provided adapter)

Dimensions: 240mm x 150mm x 70mm

Working temperature: 0 to 45°C

## Changing the batteries

Your product requires 4 x C batteries (not included) for operation.



Batteries should be removed and replaced by adults only. Only use recommended batteries or those of the same or equivalent type.

Do not mix old and new batteries or batteries of different types.

Batteries are to be inserted with the correct polarity.

The supply terminals are not to be short-circuited.

Remove exhausted batteries from item.

Remove batteries if equipment is not used for extended periods of time.

Rechargeable batteries are to be removed from the item before being recharged.

Rechargeable batteries are only to be charged under adult supervision.

Do not attempt to recharge non-rechargeable batteries.

Batteries contain substances that may be harmful to the environment and human health.

Keep out of the reach of children and seek immediate medical help if swallowed.



This symbol indicates that batteries should not be disposed of in the normal household waste but taken to appropriate local recycling facilities, where and when these are available.

- Never throw batteries in a fire or attempt to open outer casing.

## Service

This product should only be repaired or serviced by an authorised service engineer and only genuine approved spare parts should be used.

This symbol  indicates that this product should not be treated as normal household waste and it should be recycled. John Lewis do not operate instore take back, but as members of the Distributor Take Back scheme have funded the development and upgrade of recycling facilities across the UK. Please take it to your nearest collection facility or for further details contact your local council or visit [www.recycle-more.co.uk](http://www.recycle-more.co.uk).

## Guarantee

For 2 years in respect of defects found to be due to faulty workmanship or material. Proof of purchase is required for validity of the guarantee. This guarantee is no longer valid if the damage has been caused by accidental damage, alteration, repair by any unauthorised person or poor maintenance. This guarantee in no way affects your statutory rights.

Retain these instructions for future reference.



John Lewis Partnership  
171 Victoria Street  
London  
SW1E 5NN  
[johnlewis.com](http://johnlewis.com)