


# PARIS SMOKED PENDANT FITTING

IL3274

Thank you for buying this Paris pendant fitting.  
Please read the instructions and warnings carefully before use to ensure safe and satisfactory operation of this product.

This product is Class I and must be earthed

## Warnings

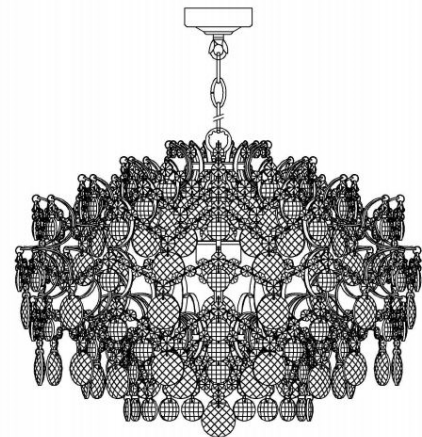
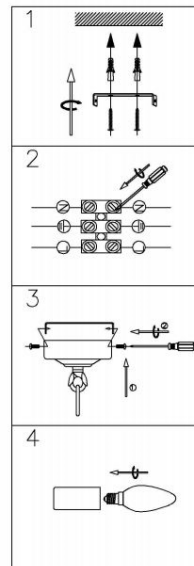
- \* It is recommended that this fitting is installed by a qualified electrician.
- \* This fitting should be fitted in accordance with IEE Wiring Regulations and the Building Regulations.
- \* To prevent electrocution switch off at the mains supply before installing or maintaining this fitting. Ensure other persons cannot restore the electricity supply without your knowledge.
- \* If you are in doubt please consult a qualified electrician.
- \* To avoid damage to concealed wiring during installation, establish the direction of the supply cable before drilling fixing holes.
- \* This fitting should be fitted to a lighting supply with protected 5 amp fuse or equivalent circuit breaker.
- \*  Indicates that the fitting is suitable for mounting on normally flammable surfaces.
- \* Always be sure to use the correct type and wattage of bulbs as indicated on the fitting. Never exceed the wattage stated.
- \* When changing the bulb, always switch off at the mains and allow the old bulb to cool down before handling. Dispose of used bulbs carefully.

## Instructions for use

1. Ensure the house electricity supply is off at the fuse board.
2. Before removing the existing rose, carefully note the position of each set of cables. If there are loop in cables then these must be terminated separately and not connected to the fitting.
3. Remove mounting bracket from fitting by undoing the screws located on the side of the ceiling cup. Retain the screws and any washers for later.
4. Using the bracket as a template, mark and then drill the fixing holes in the ceiling (ensure that the holes are drilled into a secure joist)
5. Attach mounting bracket to the mounting surface using suitable fixings. Do not attach fitting to mounting bracket at this stage. Take care not to damage wiring.

**This fitting is height adjustable at point of installation only. No attempt must be made to adjust the height once it has been attached to the ceiling. If adjustment is required at a later date the fitting must be isolated from the mains and removed from the ceiling first**

6. Lay the fitting on a clear covered surface. Use 2 pairs of pliers (use cloth to cover pliers jaws) to open the chin links then remove links as required to achieve the desired height, reconnect then close chain links. Pull any excess cable through the ceiling cup whilst making sure the chain is supporting the weight of the fitting and not the cable.
7. Lift the fitting close to supply cable and then make the electrical connections as follows:  
Connect supply live (normally brown or red) to fitting live (marked "L") on the terminal block.  
Connect supply neutral (normally blue or black) to fitting neutral (marked "N") on the terminal block.  
Connect supply earth (normally green/yellow or unsheathed) to earth (marked "⊥" or "E") on the terminal
8. Excess cable must be carefully located inside ceiling cup or within the ceiling void. Fit the ceiling cup over the mounting bracket. Secure using the screws removed earlier. Take care to ensure that no wiring is trapped during this process.
9. Fit the bulbs, type and wattage as indicated on the fitting. **The wattage indicated must not be exceeded.**
10. Switch on the electricity supply at the fuse board.



Please retain this information leaflet for future reference

## **GENERAL INFORMATION**

This fitting is designed for internal use only  
Do not use polish or abrasive cleaner – just a soft dry cloth.