

Product information

- Indoor use only
- Dimmable - When used with dimmable bulbs
- Replacement bulbs should be the same type and rating, available from John Lewis Partners or other established brands
- Clean the fitting with a soft dry cloth. Do not use abrasive chemical cleaners as this will damage the finish
- Glass parts - Just use a damp cloth. Do not use abrasive materials as these will damage the finish. Take care when handling glass parts to avoid damage or injury

Aftercare and Troubleshooting

You've switched on the light, but it's not working:

1. Check your power supply is switched on
2. Turn off the light and check that the bulb is inserted correctly
3. Check the bulb is still in working order

If there are technical issues with this product that you can't solve, please contact your nearest John Lewis & Partners shop or call Technical Support on 03301 230106.


Specification

Max power: 1 x 7W
Recommended bulb:
7W LED E27 GLS bulb for maximum brightness.
Lower wattages are also suitable.
Rated input: 220 –240V, 50Hz
Bulbs not included
IP rating: 20
Weight: 3.91kg

5-year guarantee

At John Lewis & Partners we test every light to high quality standards. That means we can offer you a 5-year guarantee.

Recycling

This symbol  indicates that this product should not be treated as normal household waste and it should be recycled. John Lewis & Partners do not operate instore take back, but as members of the Distributor Take Back scheme have funded the development and upgrade of recycling facilities across the UK. Please take it to your nearest collection facility or for further details contact your local council or visit www.recycle-more.co.uk.

John Lewis plc
SW1V 2QQ
johnlewis.com

Made in China

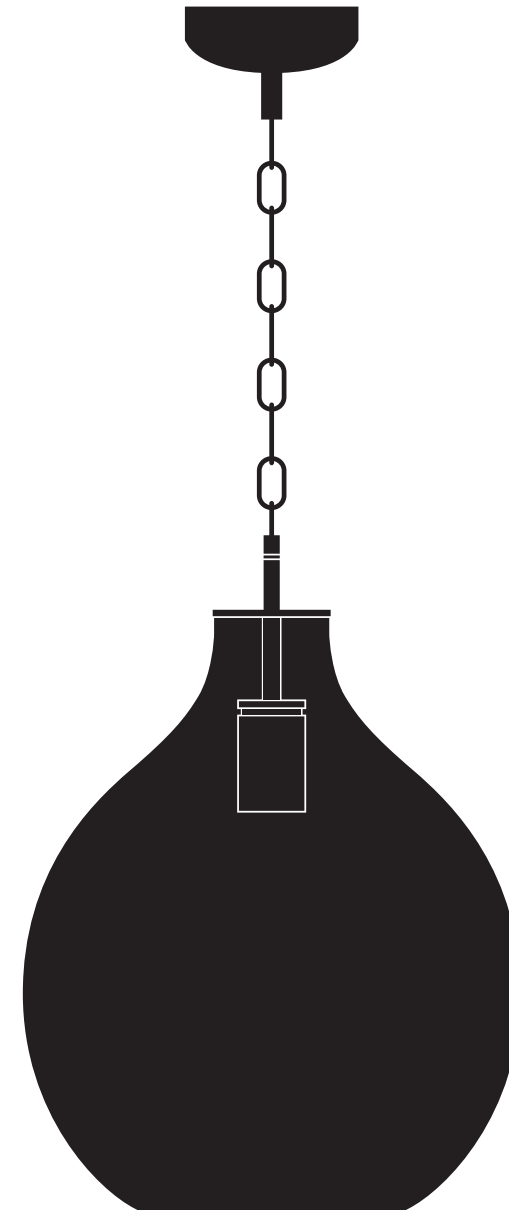


23/08/2024

Please retain these instructions for future reference.



SELSEY PENDANT USER GUIDE



Product Code:
70142015

Thank you for purchasing this Selsey light fitting. Please read the instructions carefully before use to ensure safe and satisfactory operation of this product.

Warnings!
This is a Class 1 product and must be earthed.

Please read these instructions carefully before commencing any work and keep them for future reference to ensure safe and satisfactory operation of this product It is recommended that this fitting is installed by a qualified electrician.

Install in accordance with the IEE Wiring regulations and the Building Regulations.

To prevent electrocution switch off at mains supply before installing or maintaining this fitting. Ensure other persons cannot restore the electrical supply without your knowledge.

If you are in any doubt, please consult a qualified electrician.

This light fitting should be connected to a 5 amp fused circuit.

If replacing an existing fitting, make a note of the connections.

Always use the correct type and wattage bulb. Never exceed the wattage stated.

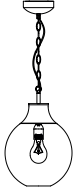
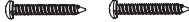

When changing a bulb or adjusting the heads, always switch off at the mains and allow to cool down. Dispose of used bulbs carefully.

This product is suitable for indoor use only.

This product is suitable for installation on surfaces with normal flammability e.g. wood, plasterboard, masonry. It is not suitable for use on highly flammable surfaces (e.g. polystyrene, textiles).

For your safety, always switch off the supply before changing lightbulbs, cleaning or removing shades. **This product is made from glass and is heavy. Therefore take extreme care when installing and cleaning this product, or changing the bulb, to avoid damage or injury.**

Parts List

Light Fitting		1	Screws		2
			Wall plugs		2

Assembly

Refer to assembly diagrams opposite. Carefully unpack the carton, making sure all the parts are present before assembly.

Step 1

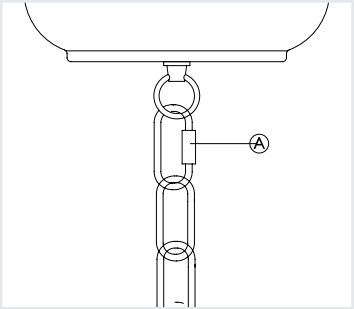
Before removing the existing fitting, **carefully note the position of each set of wires.**

Step 2

Remove the fixing bracket from the ceiling cover and attach to the ceiling using the screws provided. Ensure there is a joist at the point of fixing to support the weight of the product. Take care to avoid damaging any concealed wiring and pipes.

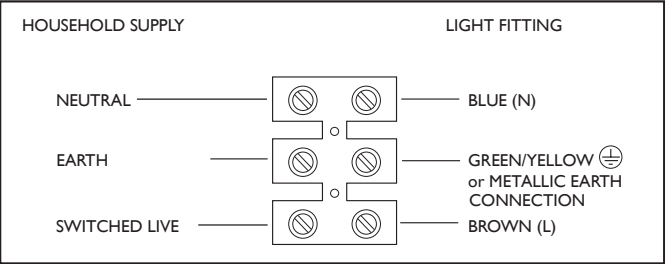
Step 3 - Height Adjustment

The drop of this product can be reduced. This is easier to do before attaching the product to the ceiling. The top chain link is a carabiner type link. Unscrew the collar (A) on the link and detach the link from the ceiling cover and chain. Work out the chain link that the carabiner will attach to and refit the carabiner link to this chain link and the hanging loop on the ceiling cover. Tighten the screw collar on the carabiner. Remove the excess chain links with a pair of pliers. Always ensure the weight of the fitting is supported by the chain and not the cable.



Step 4

Having identified the household wiring from your existing light fitting, connect to the connection block inside the product in the following way:



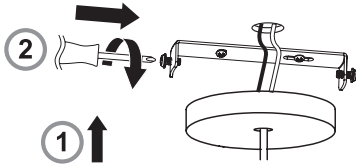
Check that.....
You have correctly identified the house wires.
The connections are tight.
No loose strands have been left out of the connection block.

Step 5

When completed, ensure that there are no bare or loose strands of wire exposed.

Step 6

Attach the product to the fixing bracket, by locating the screws in the bracket into the holes in the ceiling cover and tightening the screws to secure. Take care not to trap any wiring.



Step 7

Replace fuse or circuit breaker and switch on. Your light is now ready for use.