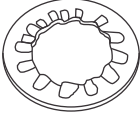
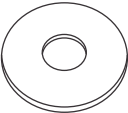





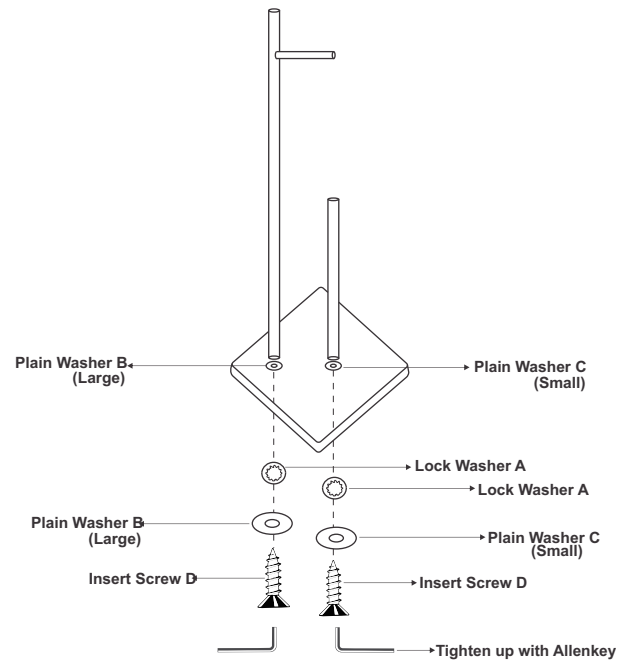
Thank you for purchasing this product. Please read the instructions and warnings carefully before use to ensure safe and satisfactory operation of this product. We recommend this product is only assembled by people competent in DIY.

Please check the pack contents before attempting to assemble this product. A full check list of components is given in this leaflet. If any components are missing, please contact to John Lewis

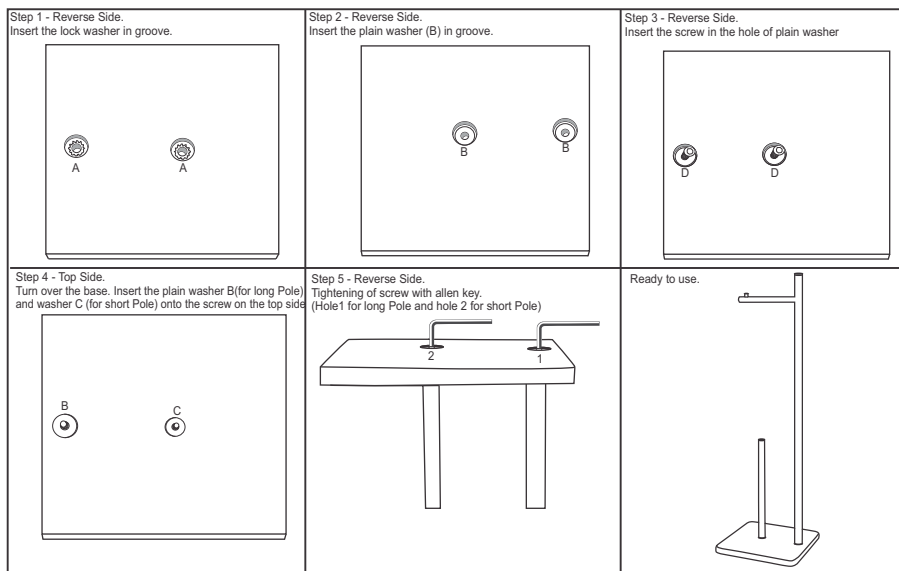
The fitting pack contains **SMALL ITEMS** which should be **KEPT AWAY FROM YOUNG CHILDREN**.
 Read this leaflet in full before commencing assembly.

Fittings and parts checklist

A	Lock Washer x 2	
B	Big Plain Washer x 3	
C	Small Plain Washer x 1 (For Top Side Short Pole)	
D	Screw x 2	
E	Allen key	



Instructions for construction and or use.



Care and Maintenance

- Check that all assembly fittings are tight on a regular basis.

Cleaning Instructions

- Dust surface with a soft, dry and lint free cloth.
- For stubborn marks, wipe clean with a damp cloth and dry the surface immediately with a lint free cloth.
- Do not use scourers or cleaning agents containing abrasives, such as powder cleaners as these will damage the surface finishes.

Please retain this information leaflet for future reference.