

Recommended bulb (not included)

3 x 9W

SES/E14 LED Energy efficient Candle

or

3 x 42W

SES/E14 Eco Halogen Candle

When changing a bulb, always switch off at the mains and allow the bulb to cool before handling. Dispose of used bulbs carefully. Do not exceed the rated power stated or use a different shape bulb from that indicated on the fitting.

Specifications

Max. power: 3 x 60W

Voltage: 240V, 50Hz

IP rating: IP20

Weight: 1.30kg



Please keep these instructions for future reference.



This symbol indicates that this product should not be treated as normal household waste and it should be recycled. John Lewis do not operate instore take back, but as members of the Distributor Trade Back scheme have funded the development and upgrade of recycling facilities across the UK. Please take it to your nearest collection facility or for further details contact your local council or visit www.recycle-more.co.uk.

We have taken great care to ensure that this product reaches you in perfect condition. However, should any parts be damaged or missing please contact the Product Helpline on (01202) 690945.

John Lewis Partnership
171 Victoria Street
London SW1E 5NN
johnlewis.com

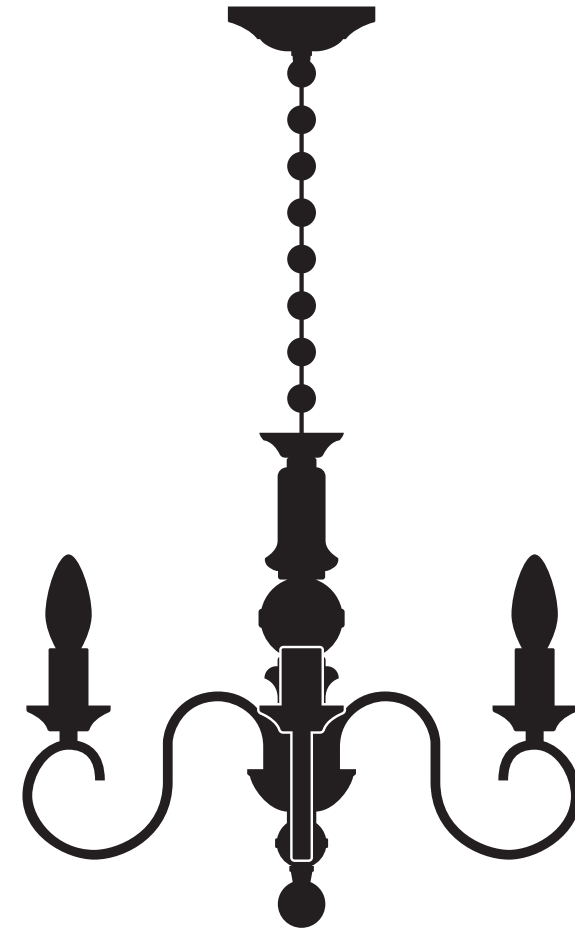
Made in China

John Lewis

User manual

Carlita 3lt

Pendant light



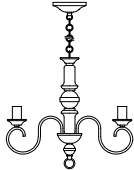



04/02/2021

Thank you for purchasing this Carlita pendant light. Please read the instructions carefully before use to ensure safe and satisfactory operation of this product.

Warnings!

This is a Class 1 product and must be earthed.
Please read these instructions carefully before commencing any work.
It is recommended that this fitting is installed by a qualified electrician.
Install in accordance with the IEE Wiring regulations and the Building Regulations.
To prevent electric shock switch off at mains supply before installing or maintaining this fitting.
Ensure other persons cannot restore the electrical supply without your knowledge.
If you are in any doubt, please consult a qualified electrician.
This light fitting should be connected to a 5 amp fused circuit.
If replacing an existing fitting, make a note of the connections.
This product is suitable for installation on surfaces with normal flammability e.g. wood, plasterboard, masonry. It is not suitable for use on highly flammable surfaces (e.g. polystyrene, textiles).
For your safety, always switch off the supply before cleaning or removing the shade.

Parts list

Parts list	Image	Qty
Light Fitting		1
Screws		2
Wall Plugs		2
Candle drips		3

Assembly

Refer to assembly drawing opposite. Carefully unpack the carton, making sure all the parts are present before assembly.

Step 1

Before removing the existing fitting, **carefully note the position of each set of wires.**

Step 2: Adjusting the drop

Please note that the drop of this product can be reduced by removing chain links. Always ensure that the weight of the fitting is supported by the chain and not the cable.

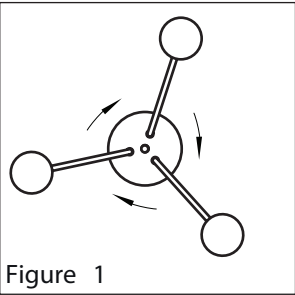


Figure 1

Step 3: Repositioning Arms

See Figure 1. To reduce the packaging, the arms on this fitting have been deliberately moved out of position. Before installation, the arms must be correctly re-positioned by hand into equally spaced positions. Each arm has a spring washer fitted to it to enable the arm to be re-positioned without the need for loosening and retightening the nut. Simply rotate each arm into the correct position.

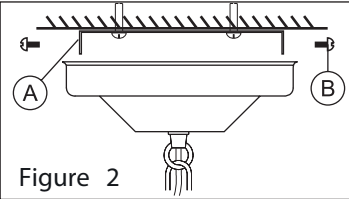


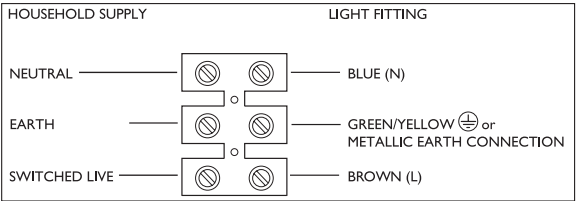
Figure 2

Step 4

See Figure 2. Remove the fixing strap (A) from the fitting by removing side screws (B). Using the screws provided in the fixing pack, secure the strap to the ceiling, making sure that there is a joist at the point of fixing to support the weight of the product. Take care to avoid damaging any concealed wiring and pipes.

Step 5

Having identified the household wiring from your existing light fitting, connect to the connection block inside the product as shown.



Check that

- You have correctly identified the house wires.
- The connections are tight.
- No loose strands have been left out of the connection block.

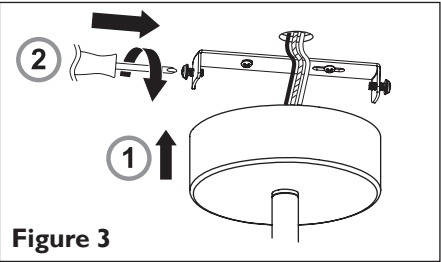


Figure 3

Step 6

See Figure 3. Attach the product to the fixing bracket using side screws by locating the screws in the bracket into the holes in the ceiling cover and tightening the screws to secure.

Step 7

Fit the bulbs as per the details overleaf.

Step 8

Replace fuse or circuit breaker and switch on. Your light is now ready for use.

Care instructions

We recommend cleaning with a soft dry cloth. Do not use abrasive materials as these will damage the finish.