

# SLATER TOUCH TABLE LAMP

## INFORMATION LEAFLET

Thank you for purchasing this table lamp. Please read the enclosed information carefully before use to ensure safe and satisfactory operation of this product.

### Warnings

This product is only suitable for connection to a 240V~50Hz supply in accordance with current IEE Wiring Regulations. It is for indoor use only, and not suitable for a bathroom location. This is a Class II product and must NOT be earthed. The lamp must be protected by a 3 amp fuse in the mains plug. Do not plug into the mains until your lamp is fully assembled.

Under no circumstances must this table lamp be covered with any material as this could pose a safety hazard. It must be used on a stable, flat surface.

When manoeuvring or assembling this product, it must be lifted from the bottom section.

Always use correct type and wattage bulb. Never exceed the wattage stated.

If the mains cable becomes damaged it must only be replaced by a technically competent, qualified person.

### Product assembly

#### Step 1

Carefully unpack the carton, making sure all the parts are present before assembly.

#### Step 2

To attach the shade (A) first remove the shade ring (B) from the threaded lampholder. Place the shade over the lampholder and secure in place by refitting the shade ring. Tighten to secure in place but do not overtighten.

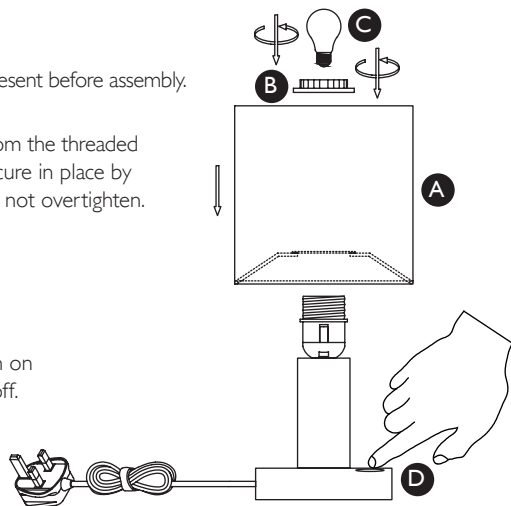
#### Step 3

Fit the recommended bulb (C). Max. 7W LED E27 GLS.


#### Step 4

Your table lamp is now ready for use.

Plug the table lamps into the mains. Just touch the switch on the lampholder base (D) to switch on and again to switch off.



### Recycling

This symbol  indicates that this product should not be treated as normal household waste and it should be recycled. John Lewis & Partners do not operate instore take back, but as members of the Distributor Take Back scheme have funded the development and upgrade of recycling facilities across the UK. Please take it to your nearest collection facility or for further details contact your local council or visit [www.recycle-more.co.uk](http://www.recycle-more.co.uk).

### Cleaning

Clean the fitting with a soft dry cloth. Do not use abrasive chemical cleaners as this will damage the finish.