

## KMDA 7272 FR-U Silence

Induction hob with integrated vapour extraction

with Silence motor and 4 individual cooking zones for recirculation mode



- The quietest TwoInOne from Miele – Silence motor
- Flexible installation – Plug&Play or ducted recirculation mode
- Ample space – 4 round cooking zones
- Automatic fan power regulation – Con@ctivity
- Compact control using the numerical display – ComfortSelect Plus

EAN: 4002516658054 / Material number: 12246260 / Old Material Number: 26727209GB

Heating type	
Heating type on the left	Electric with induction
Construction type	
Induction hob with integrated extractor	•
Operating modes	
Design	
Elegant glass ceramic surface	•
Ceramic surface colour	Black
Stainless steel frame	•
Frameless – surface-mounted	•
Flush fit extractor	•
Cooking zone details	
Number of cooking zones	4
Maximum number of pans	4
1st cooking zone/cooking area	
Position	front left
Type	Dual-circuit ring
Max. Booster power rating in W	3000
Max. rating in W	2300
2nd cooking zone/cooking area	
Position	rear left
Type	Dual-circuit ring
Size in mm	Ø 100–180
Max. Booster power rating in W	2100
Max. rating in W	1400
User convenience	
Operation via sensor controls	ComfortSelect Plus
Automatic function Con@ctivity	•
Digital power level display	•
Display colour	Yellow
Auto heat-up	•
Permanent pan recognition	•
Keeping warm	•
Stop & Go function	•
Recall function	•
Minute minder	•
Safety switch-off	•
Individual setting options (e.g. buzzers)	•
Active charcoal filter saturation indicator	•
Run-on time 5/15 min.	•
Grease filter saturation indicator	•
Cleaning convenience	
Easy to clean ceramic glass	•
Easy-to-clean canopy interior – CleanCover	•
Filter system	
Number of dishwasher-safe stainless steel grease filters (10-ply)	1
Recirculation	
Air throughput in Booster level (m <sup>3</sup> /h) according to EN 61591	510

## KMDA 7272 FR-U Silence

Induction hob with integrated vapour extraction

with Silence motor and 4 individual cooking zones for recirculation mode



EAN: 4002516658054 / Material number: 12246260 / Old Material Number: 26727209GB

Sound power in Booster level (dB(A) re 1 pW) acc. to EN 60704-3 70.0

### Safety

Safety switch-off	•
Lock function	•
System lock	•
Overheating protection	•
Residual heat indicator	•

### Technical data

Dimensions in mm (width)	800
Dimensions in mm (height)	194
Dimensions in mm (depth)	520
Cutout dimensions in mm (width) with surface-mounted installation	780
Casing height incl. connection box in mm	194
Cutout dimensions in mm (depth) with surface-mounted installation	500
Weight in kg	16
Total rated load in kW	7.50
Voltage in V	230
Frequency in Hz	50-60
Length of supply lead in m	1.6

### Accessories supplied

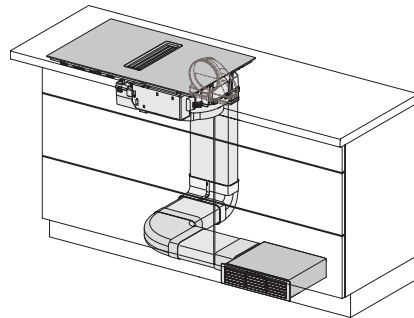
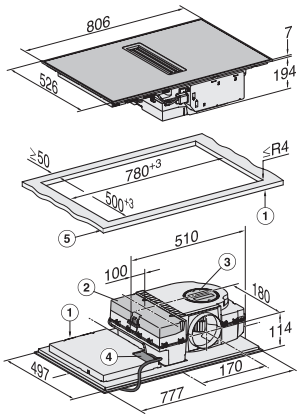
Number of mains cables with plug	No
----------------------------------	----

KMDA 7272 FR-U Silence

## Induction hob with integrated vapour extraction

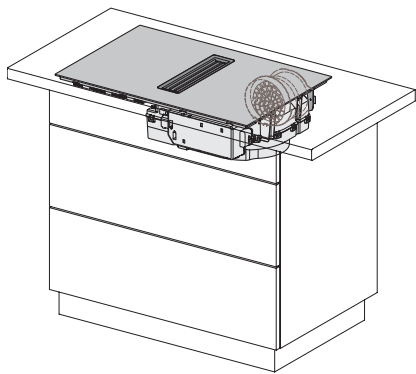
with Silence motor and 4 individual cooking zones for recirculation mode

	Abluftbetrieb	Geführter Umflutbetrieb	Plug&Play-Betrieb
KMDA 7272 FR-A	✓	—	—
KMDA 7272 FR-U	—	✓	✓✓
KMDA 7272 FL-A	✓	—	—
KMDA 7272 FL-U	—	✓	✓✓



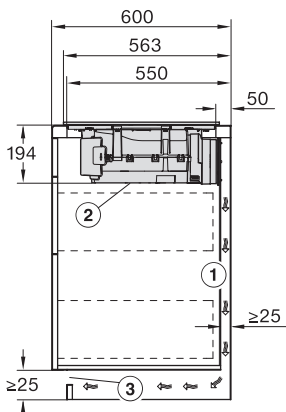
## KMDA7272FL/FR – Operating options

Possible, Possible – further accessories necessary, –  
Programming must be changed – further accessories  
necessary

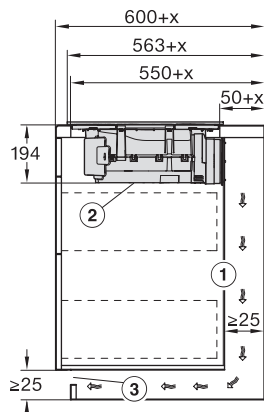


## KMDA7272FR, KMDA7473FR – Installation drawing

1) Front, 2) removable drip tray, 3) cleaning flap, 4) Mains connection box with mains connection cable, L = 1600 mm, 5) Worktop thickness, Exhaust air and guided recirculation mode:  $\geq 10$  mm, Plug&Play operation:  $\geq 10$  mm –  $\leq 40$  mm



KMDA7272FL/FR, KMDA7473FL/FR, Air circulation  
(Installation drawing)



KMDA7272FL/FR, KMDA7473FL/FR, Plug&Play  
(Installation drawing)

KMDA7272FR, KMDA7473FR – Side view lying on top,  
Plug&Play – Installation drawing

A minimum distance of 25 mm must be maintained for routing the exhaust air duct between the cabinet wall and an adjacent room wall or furniture., The removable collection tray and the cleaning flap must be accessible after installation., The cross-section of the vent opening must be at least 425 cm<sup>2</sup>.

KMDA7272FR, KMDA7473FR – Side view lying on top+X,  
Plug&Play – Installation drawing

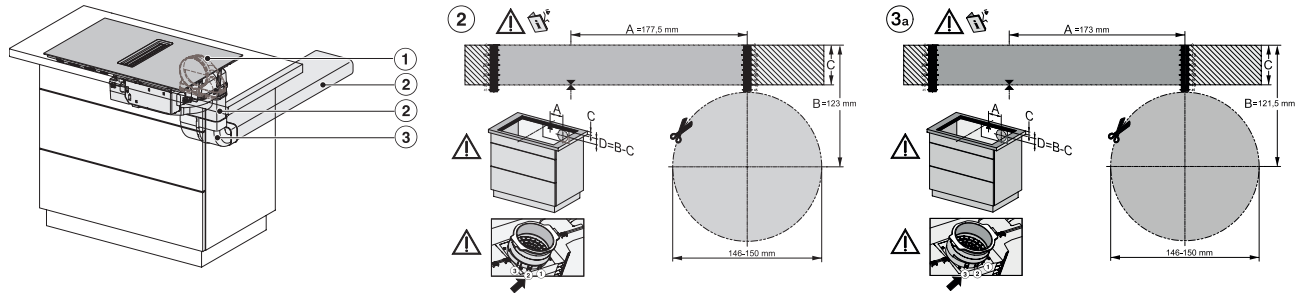
A minimum distance of 25 mm must be maintained for routing the exhaust air duct between the carcass wall and an adjacent room wall or furniture. If the carcass rear wall is > 555 mm from the worktop front, the Plug&Play adapter must be extended with a supplementary set from Miele.

The removable drip tray and the cleaning flap must be accessible after installation. The cross-section of the vent opening must be at least 425 cm<sup>2</sup>., x Dimension by which the worktop depth is greater than 600 mm.

## KMDA 7272 FR-U Silence

Induction hob with integrated vapour extraction

with Silence motor and 4 individual cooking zones for recirculation mode



KMDA7272FL/FR, KMDA7473FL/FR – Installation variant  
2 Basis – drawing

1) DFK-AK 90, 2) DFK-R 1000, 3) DFK-BV 90

KMDA7272FL/FR, KMDA7473FL/FR – surface installation,  
drilling template, installation drawing

KMDA7272FL/FR, KMDA7473FL/FR – surface installation,  
21 cm, drilling template, installation drawing