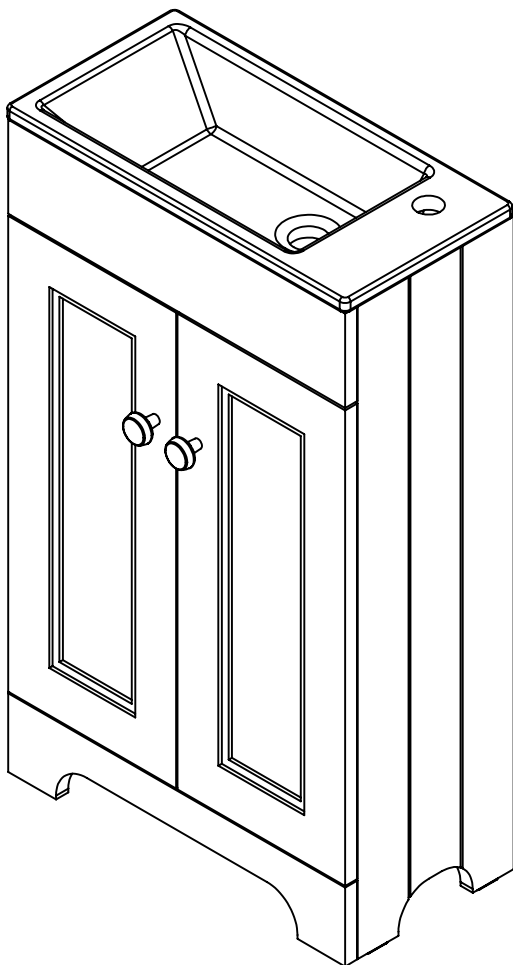


# hib.

## Installation Guide Herrington Cloakroom



**Thank you for purchasing this hib. product.**

Please read through these instructions carefully and refer back to them during installation to ensure that your product is fitted safely and that it retains its high quality finish.

Products Covered in Booklet:

**85038 / 85039 / 85040**

**FI#03 031 R250516 VerSH250516**

## Warnings for Safe Use

- Please read the instructions and warnings carefully before installing the product and ensure this document is kept with the product for future reference to ensure product longevity and in the interest of safety.
- This product is intended for domestic use only.
- Not for use in saunas, steam rooms.
- It is recommended that this product is installed by 2 people who are able to meet the level of competence required in order to comply with relevant regulations.
- This product is designed for installation into a brick or masonry block wall. If mounting onto other substrate, ensure appropriate fixing and batons are used (if required) and the load bearing of the wall is sufficient.
- When drilling use appropriate eye protection.
- Take care when using power tools near water - the use of a residual current device (RCD) is advised.
- Beware of hidden cables or pipes. Take care if drilling on tiled surfaces in case the drill slips.
- Do not overload shelves or unit.
- Do not sit or stand on the unit.
- Ensure that excessive standing and surface water is removed from the product to avoid long term damage and spoiling.

## Tools & Equipment Needed



### What's in the Box

- **Herrington Unit**
- **Fittings Pack**
- **Sealant Bottle**

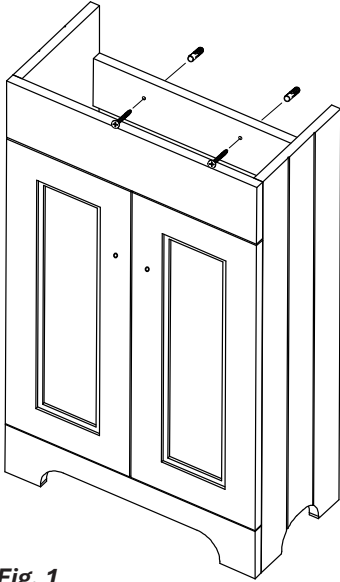
### Tools Not Provided

- **Tape Measure**
- **Drill & Drillbit**
- **Spirit Level**

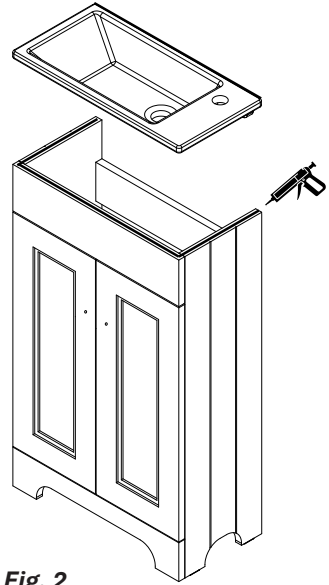
### • Pencil

- **Screwdriver**
- **Silicone Gun**
- **Masking Tape**

## Instructions



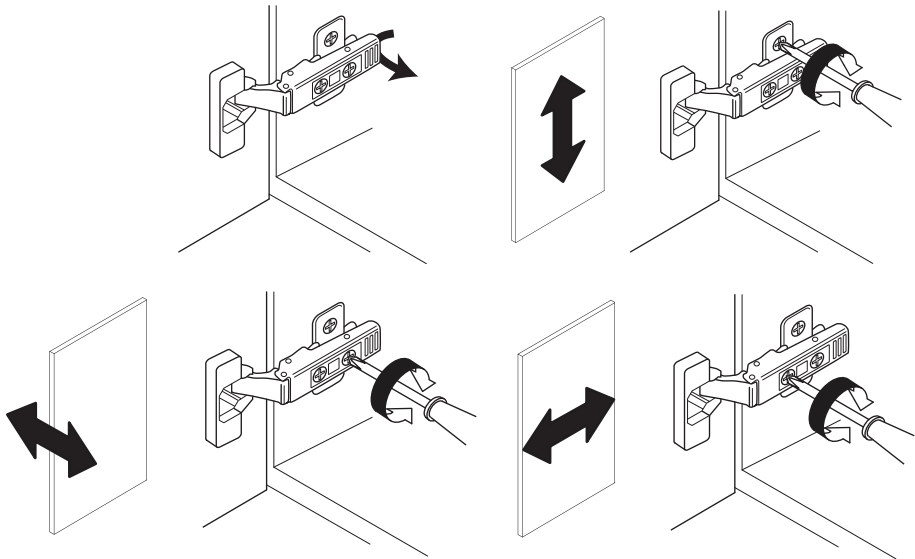
**Fig. 1**  
*Fixing Holes*



**Fig. 2**  
*Basin Installation*

1. Position the unit in a suitable location.
2. Carefully mark the desired position of the unit using a soft pencil.
3. Measure the positions of the two fixing holes in the back of the unit, carefully mark the position of the holes onto the wall using a soft pencil, see **Fig 1**.
4. Before drilling, ensure there are no hidden cables or pipes behind the mounting points. Using a suitable drill bit, drill holes in the marked positions to a suitable depth.
5. Insert wall plugs level with the surface of the wall. If fitting to a tiled surface, wall plugs should be inserted below the tile surface to avoid cracking. NB. For plasterboard walls, specialist heavy duty fixings should be purchased from any DIY or hardware store.
6. Bring the unit back into position, and fix the unit to the wall by inserting screws through the back of the unit, into the holes previously drilled.
7. Fix handles to the unit.
8. Mount the basin onto the furniture unit using a fine bead of silicone to seal the washbasin to the unit and wall edges, see **Fig 2**.
9. If necessary, the door hinges can be adjusted in order to fine tune their alignment. Fine adjustments can be made to the door by adjusting the small screws (Please see overleaf).

## Door Removal & Adjustment



## Aftercare

To preserve the high quality finish of your hib. product, please ensure you regard the following care and cleaning recommendations:

- **Use only a soft damp cloth.**
- **Wipe off all water spillages as soon as possible.**
- **Do not use any abrasives or solvents.**

In the unlikely event that this product should fail please contact the retailer from which the item was purchased.

**T: +44 (0)20 8441 0352 E: [sales@hib.co.uk](mailto:sales@hib.co.uk) [hib.co.uk](http://hib.co.uk)**

**Building 3, North London Business Park, Oakleigh Road South, New Southgate, London. N11 1GN.  
3rd Floor, 40 Mespil Road, Dublin 4. DO4 C2N4.**

©hib. Copyright: No part of this document may be reprinted or duplicated without hib. consent. All sizes and measurements are approximate, but we do try and make sure they are as accurate as possible. In the interest of continuous product development, hib. reserves the right to alter specifications as necessary. E & OE.