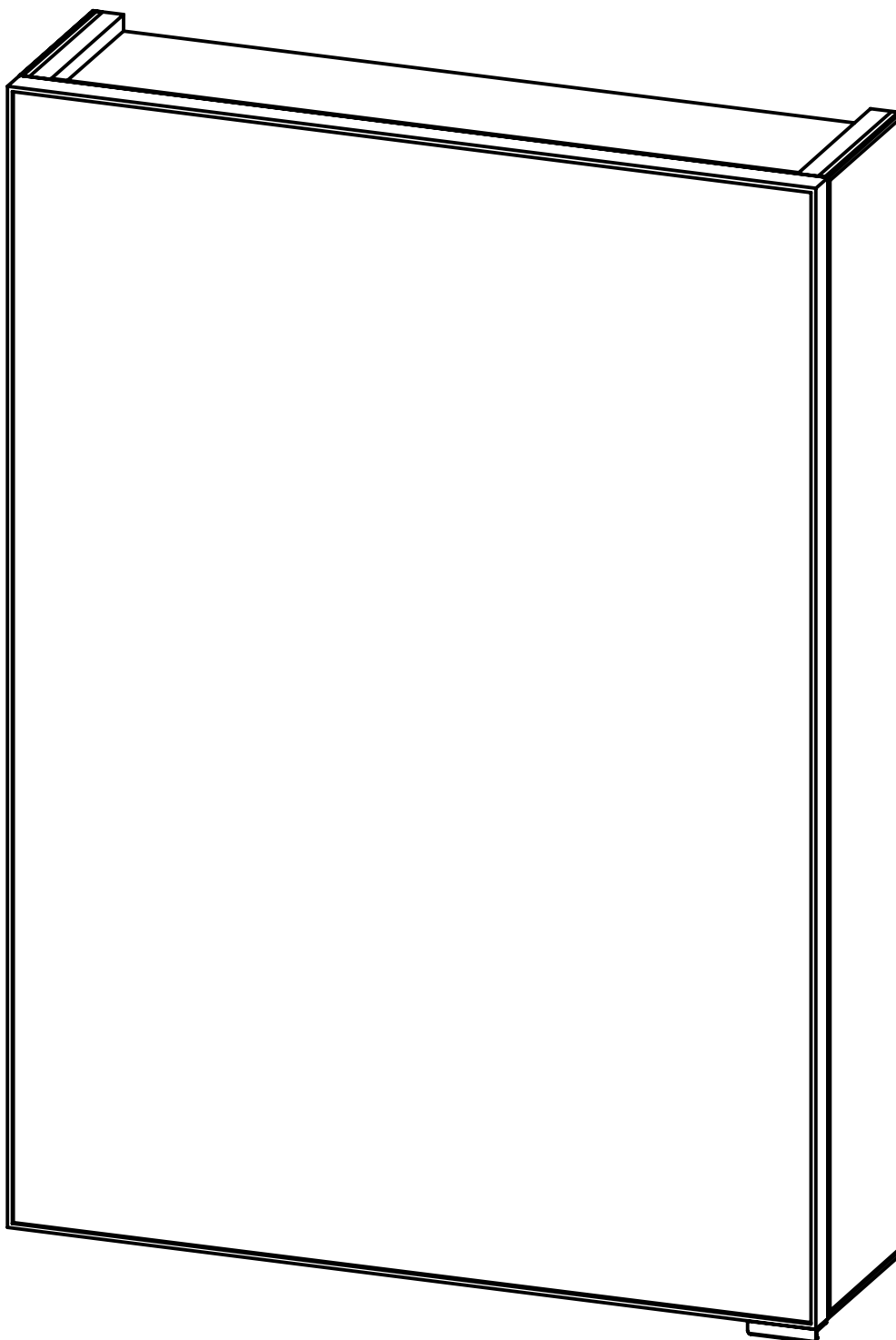


MIRRORED BATHROOM CABINET USER GUIDE



Mirrored Bathroom Cabinet Black: 84900204
Mirrored Bathroom Cabinet Brushed Brass: 84900205

Getting Started

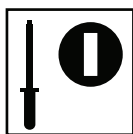
Please ensure instructions are read in full before attempting to install this product.

Please check the pack content before attempting to install this product. A full checklist of components is given in this leaflet. If any components are missing please contact John Lewis & Partners.

Read this leaflet in full before commencing installation.

Pack Content

x1 Mirrored Bathroom Cabinet



Flat head screwdriver
required

Instructions & Warnings for Safe Use



Please read the instructions and warnings carefully to ensure a long life for your product and safe usage. This instruction leaflet must be retained with the product for future reference. These warnings have been provided in the interest of safety. You **MUST** read them carefully before using the appliance. If you give the product to another person, please give them this manual as well.



Wear suitable eye protection when drilling. Take care when using power tools near water - the use of a residual current device (RCD) is advised.



Beware of hidden cables or pipes. Take care if drilling on tiled surfaces in case the drill slips. A piece of masking tape applied to the wall before marking out the fixing holes will stop the drill from wandering.



DO NOT strike glass components with hard or pointed items.



DO NOT place very hot or very cold items against or in close proximity to glass surfaces unless an adequately thick insulation material is used to prevent such items coming in contact with the glass.



The nominal thickness of the mirror glass used in this product varies from 3mm and is film backed for safety. If the glass becomes chipped or broken replace immediately.



This product could be dangerous and is only to be installed by a competent person.

Guide to Wall Mounting & Fixings

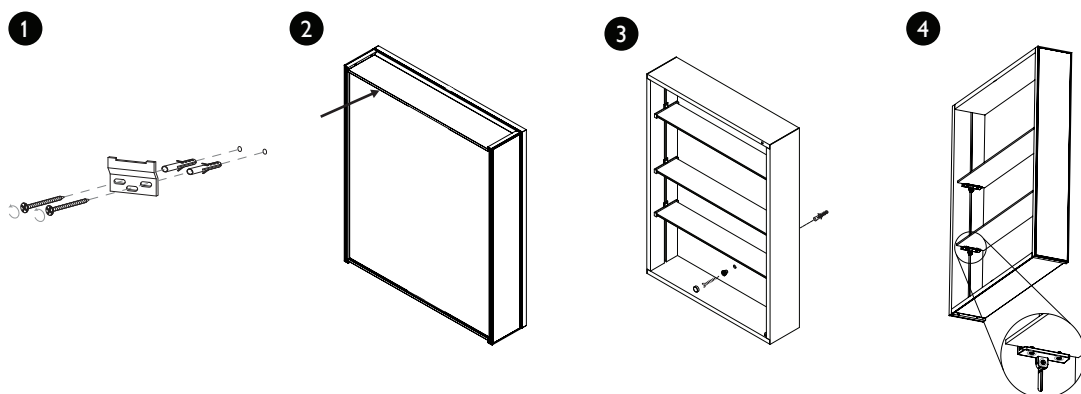
WARNING! - Different wall materials require different types of screws / fixings. Please ensure you use the correct screws / fixings for your type of walls and seek professional advice if you are not sure. Failure of the product due to incorrect fixings is the responsibility of the installer.

IMPORTANT - When drilling into the walls always check that there are no hidden wires or pipes etc. Take care when drilling on glazed tile surfaces in case the drill slips. A piece of masking tape applied to the wall before marking out the fixing holes will stop the drill from wandering.

REVIEW - Please read the fixing method guide located on the back page and on the back of the mirror.

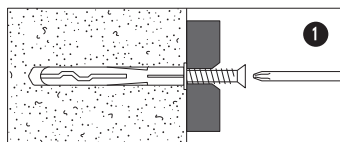
Installation

1. Position the cabinet in a suitable location.
2. Mark the position of the cabinet using a soft pencil ensuring it is level. Remove the cabinet and mark the mounting points (1). Please ensure that all marked mounting points accurately match up with the fixing points on the cabinet.
3. Using a suitable drill bit, drill holes in the marked positions to a suitable depth. If drilling through tile, use a ceramic drill bit.
4. Insert wall plugs level with the surface of the wall. If fitting to a tiled surface, wall plugs should be inserted below the tile surface to avoid cracking. NB. For plasterboard walls, specialist fixings should be purchased from any DIY store.
5. Fix the brackets to the wall using appropriate screws (1).
6. Hang the cabinet on the wall ensuring that it is firmly located on the bracket (2).
7. Once in position mark the wall through the hole in the cabinet (3). Remove the cabinet, drill a hole in the wall at the marked position and insert wall plug. Rehang the cabinet and secure using screw, washer and cover.
8. Align door(s) using adjustment screws within hinges.
9. Starting with the top shelf, insert the shelf supports in the desired position and fit the shelf. (4).



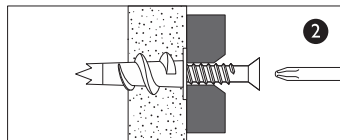
Fixing Methods

You can use one of the following types of wall plug if your walls are made of brick, breezeblock, concrete, stone or wood.



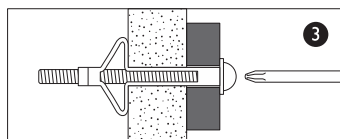
General Purpose - wall plug

Generally aerated blocks should not be used to support heavy loads, use a specialist fitting in this case. For light loads, general – purpose wall plugs can be used.



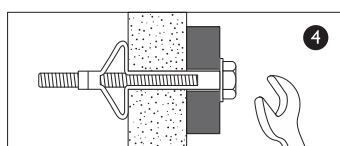
Plasterboard - wall plug

For use when attaching light loads on to plasterboard partitions.



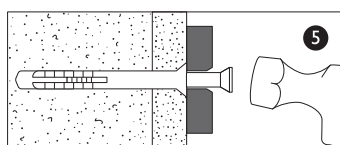
Cavity Fixing - wall plug

For use with plasterboard partitions or hollow wooden doors.



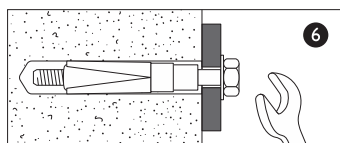
Cavity Fixing - Heavy Duty wall plug

For use when fitting or supporting heavy loads such as shelving, wall cabinets and coat racks.



Hammer Fixing - wall plug

For use with walls stuck with plasterboard. The hammer fixing allows it to be fixed to the wall rather than the plasterboard. Always check the fixing is



Shield Anchor wall plug - Heavy loads

For use with heavier loads such as TV and Hi-Fi speakers and satellite dishes etc.

Care Instructions & Aftercare Service

Do not use abrasives or solvents when cleaning this product.

Wipe off all water spillages as soon as possible using a soft cloth.

In the unlikely event that this product should fail please contact customer services, contact details overleaf.

Guarantee

This item is guaranteed for 5 years in respect of defects found to be due to faulty workmanship or materials. Proof of purchase is required for the validity of the guarantee. This guarantee is no longer valid in the case of accidental damage, alteration, repair by any unauthorised persons or poor maintenance. This guarantee in no way affects your statutory rights. This guarantee is only valid if the item has been used solely for domestic purposes. Please retain these instructions for future use.

Technical Support

John Lewis & Partners Technical Support on **03301 230106**