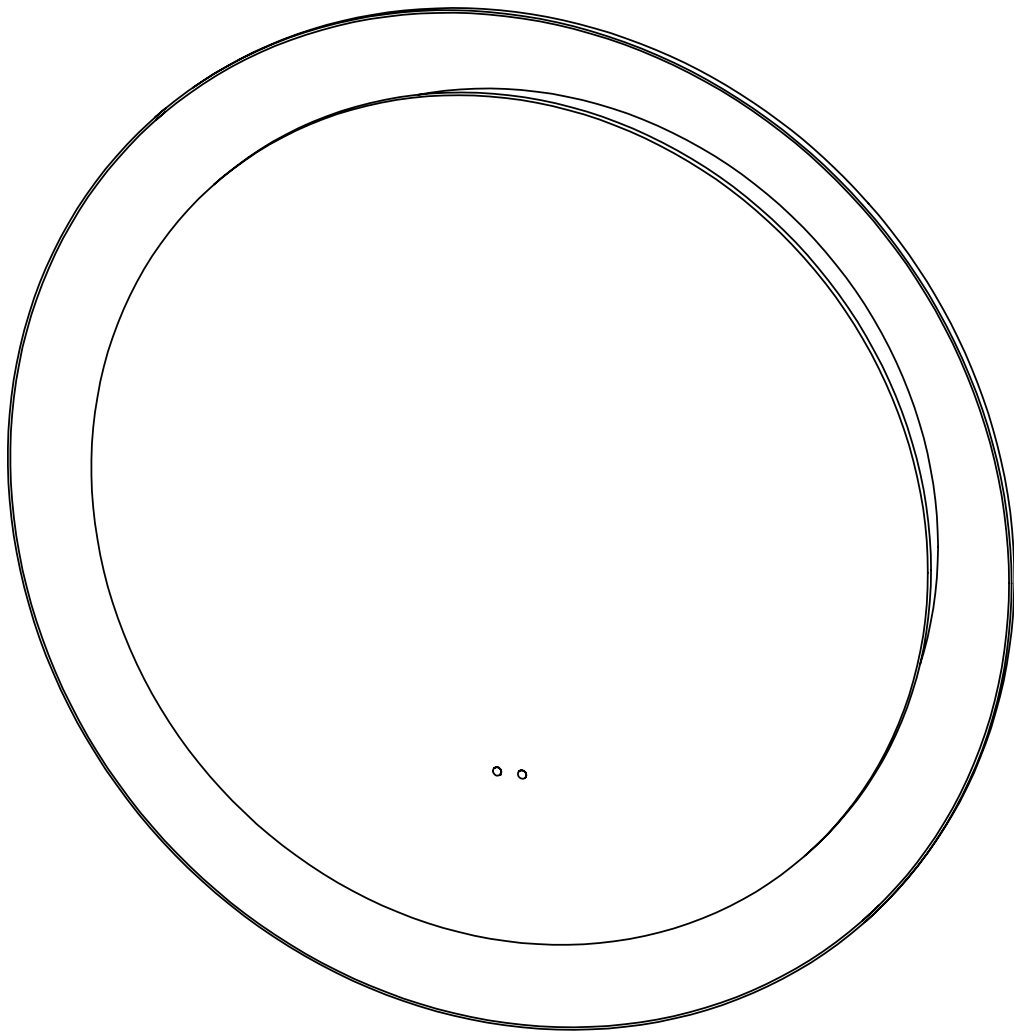


ROUND MIRROR USER GUIDE



Thank You

Thank you for purchasing this Round Mirror. Please read the instructions carefully before use to ensure safe and satisfactory operation of this product.

At John Lewis, we are committed to making great products possible. From our in-house Design Team, to our Buyers, we work together to bring great design to life. Our Product Technologists work collaboratively with our Buyers and suppliers to ensure the legality, safety and quality of the product we sell. We are all committed to designing and developing products to the highest industry standards. We hope you are happy with your product and welcome any feedback or comments you may have.

Instructions & Warnings for Safe Use



Please read the instructions and warnings carefully to ensure a long life for your product and safe usage. This instruction leaflet must be retained with the product for future reference. These warnings have been provided in the interest of safety. You **MUST** read them carefully before using the appliance. If you give the product to another person, please also give them this manual.



Always switch off the electrical supply at the mains during installation and maintenance. It is recommended that the fuse is withdrawn or the circuit breaker is switched off for the necessary circuit before installation commences.



Wear suitable eye protection when drilling. Take care when using power tools near water - the use of a residual current device (RCD) is advised.



Beware of hidden cables or pipes. Take care if drilling on tiled surfaces in case the drill slips. A piece of masking tape applied to the wall before marking out the fixing holes will stop the drill from wandering.



DO NOT strike glass components with hard or pointed items.



DO NOT place very hot or very cold items against or in close proximity to glass surfaces unless an adequately thick insulation material is used to prevent such items coming in contact with the glass.



The nominal thickness of the mirror glass used in this product is 5mm and is film backed for safety. If the glass becomes chipped or broken replace immediately.



This product should be positioned well away from curtains and other fabrics. Never cover the mirror. This product is heated, we recommend that it is turned off after use and should not be left on for prolonged periods of time.

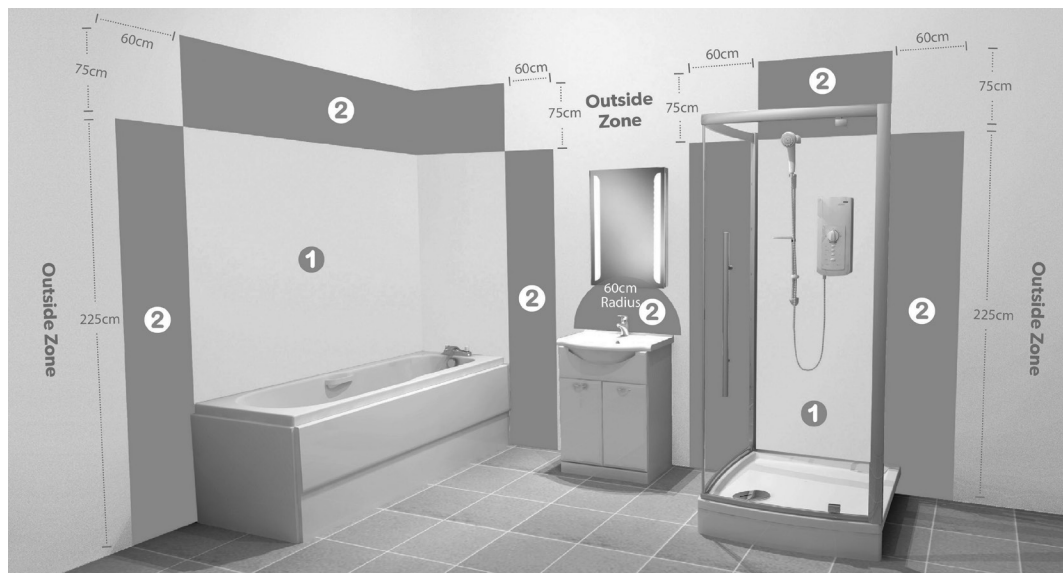


This product could be dangerous and is only to be installed by a competent person.

Electrical Safety Information

John Lewis recommends that all electrical bathroom products should only be installed in accordance with current building and wiring regulations, if in doubt consult an electrician. Ensure mains power supply is switched off before starting installation. Before drilling, ensure there are no hidden cables or pipes in the wall.

Electrical Information



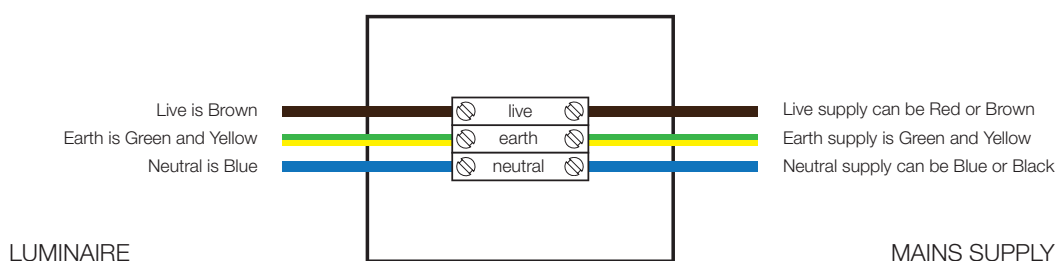
(Fig. 1)

This product is: **IP44 rated**

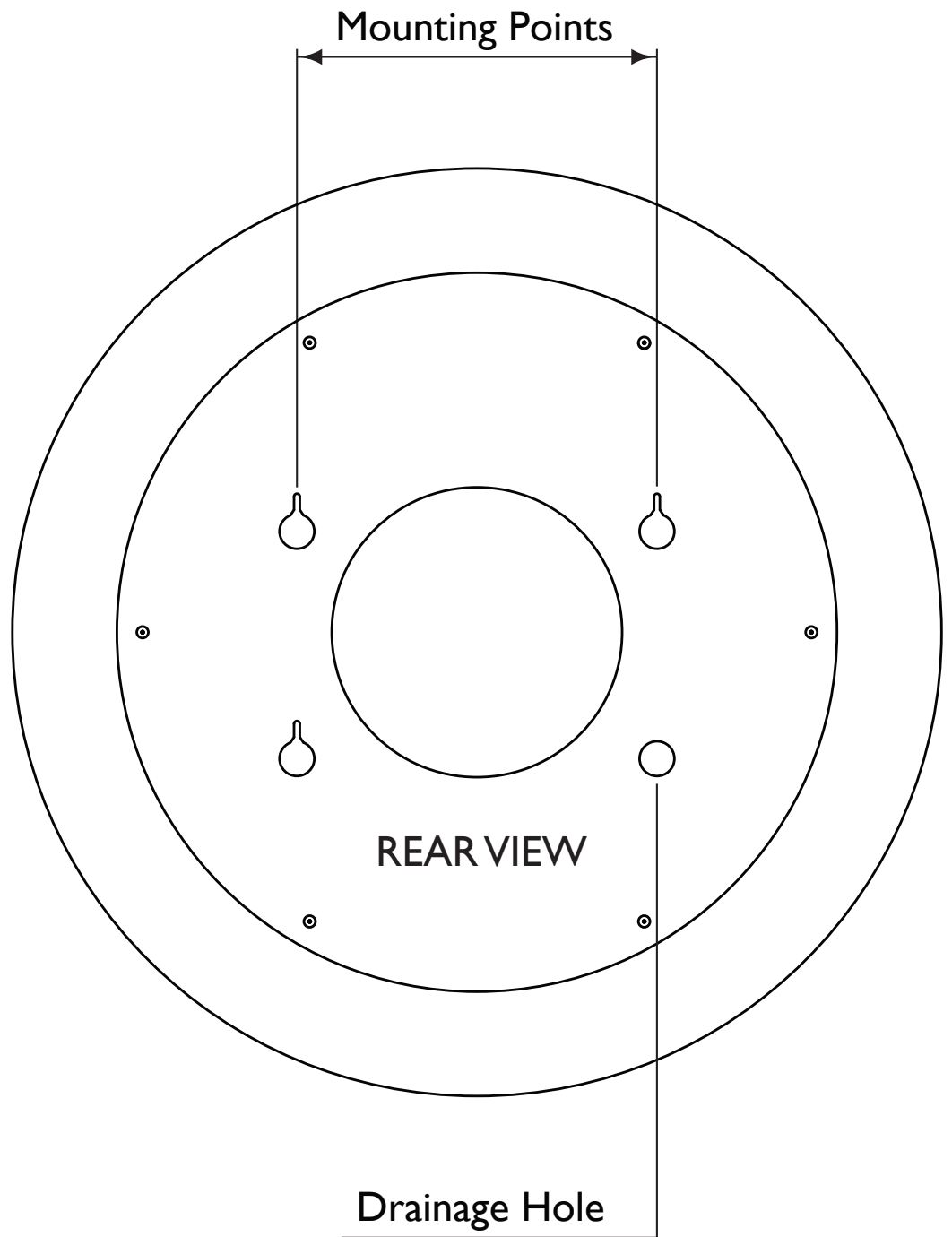
It is suitable for installation in zones: **2 & Outside Zone**

All installations must comply with guidelines which are based on a zonal concept. The diagram above illustrates this concept and must be followed to ensure the safe installation of electrical appliances in the bathroom. These regulations apply to domestic installations only. Installations must be made in accordance with the current IEE wiring regulations and relevant building regulations.

Wiring Diagram



(Fig. 2)



(Fig. A)

Installing the Product

NB. Mirrors must be installed with a minimum distance of 150mm between the infra-red sensor switch and any adjacent wall or object to ensure correct operation of the sensor.

1. Position the mirror in a suitable location, according to the zonal diagram (Fig. 1) ensuring that the domestic electrical mains supply is within reach of the cable connection point of the product.
2. Carefully mark the position of the mirror using a soft pencil ensuring it is level. Remove the mirror and mark the mounting points (see Fig. A)
3. Ensure that all marked mounting points accurately match up with the fixing points on the mirror.
4. **Before drilling, ensure there are no hidden cables or pipes behind the mounting points.** Using a suitable drill bit, drill holes in the marked positions to a suitable depth.
5. Insert wall plugs level with the surface of the wall. If fitting to a tiled surface, wall plugs should be inserted below the tile surface to avoid cracking.

NB. For plasterboard walls, specialist fixings should be purchased from any DIY or hardware store.

6. Screw fixings into wall plugs.
7. **Ensure the domestic electrical mains supply to which the mirror is being connected is turned off.** Connect the domestic mains supply to the terminal box according to the wiring diagram. (Fig. 2)
8. Hang the mirror in position.
9. Switch the domestic electrical mains supply for the mirror back on.

Guide to Wall Mounting and Fixings

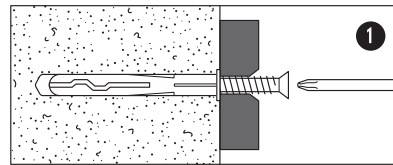
Key Information

WARNING! - Different wall materials require different types of screws / fixings. Please ensure you use the correct screws / fixings for your type of walls and seek professional advice if you are not sure. Failure of the product due to incorrect fixings is the responsibility of the installer.

IMPORTANT - When drilling into the walls always check that there are no hidden wires or pipes etc. Take care when drilling on glazed tile surfaces in case the drill slips. A piece of masking tape applied to the wall before marking out the fixing holes will stop the drill from wandering.

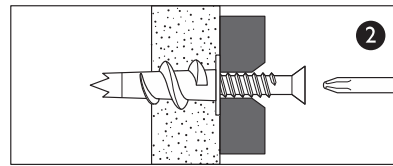
Fixing Methods

You can use one of the following types of wall plug if your walls are made of brick, breezeblock, concrete, stone or wood.



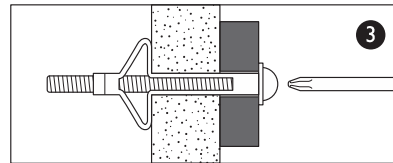
General Purpose - wall plug

Generally aerated blocks should not be used to support heavy loads, use a specialist fitting in this case. For light loads, general – purpose wall plugs can be used.



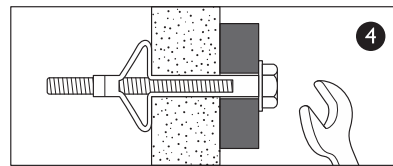
Plasterboard - wall plug

For use when attaching light loads on to plasterboard partitions.



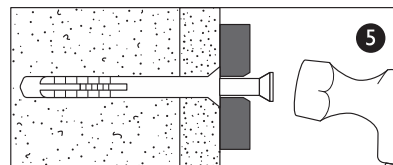
Cavity Fixing - wall plug

For use with plasterboard partitions or hollow wooden doors.



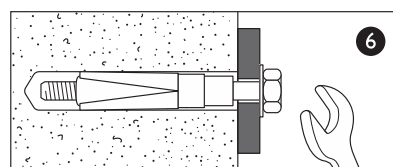
Cavity Fixing - Heavy Duty wall plug

For use when fitting or supporting heavy loads such as shelving, wall cabinets and coat racks.



Hammer Fixing - wall plug

For use with walls stuck with plasterboard. The hammer fixing allows it to be fixed to the wall rather than the plasterboard. Always check the fixing is secure to the retaining wall.

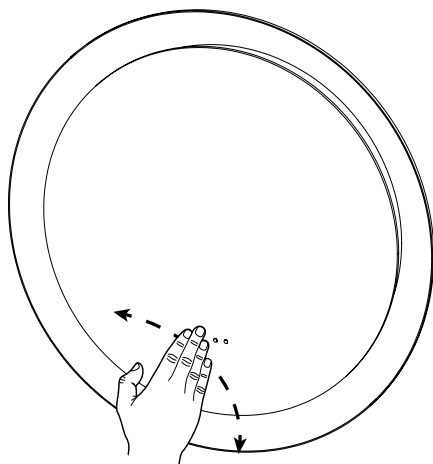


Shield Anchor wall plug - Heavy loads

For use with heavier loads such as TV and Hi-Fi speakers and satellite dishes etc.

Additional Information

Operating instructions



This mirror is fitted with colour temperature changing technology.

To turn illumination on / off

Slowly move your hand past the sensor (within 10cm) on the front of the mirror to turn the illumination ON.

Repeat this action to turn the illumination OFF.

To adjust the colour temperature illumination

To cycle through warm to cool colour temperature, hold your hand over the sensor - remove when the desired colour temperature has been reached.

NB. Heated Pad is only on when mirror is illuminated.

Care Instructions & Aftercare Service

Do not use abrasives or solvents when cleaning this product.

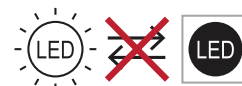
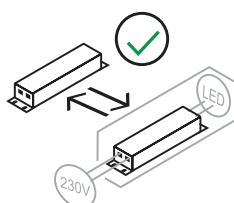
Wipe off all water spillages as soon as possible using a soft cloth.

In the unlikely event that this product should fail please contact customer services, contact details overleaf.

Product Specification

Product	Round Mirror
Net weight (kg)	4.4
Light source	LED
Total Wattage (w)	24
Voltage (V)	230
Lumens (Lm)	1180
Kelvins (k)	2700-6000
Energy rating	F
IP rating	IP44
Hanging Orientation	N/A

This product contains a light source of energy efficiency Class F



Service & Disposal

This product should only be repaired or serviced by an authorised service engineer. Only genuine, approved spare parts should be used.



WEEE compliance

Must not be mixed with general household waste

The WEEE symbol indicates that this product should not be treated as normal household waste and should be recycled. John Lewis & Partners does not operate in-store take back, but as a member of the Distributor Take Back scheme has funded the development and upgrade of recycling facilities across the UK. Please take your old appliance to your nearest collection facility. For further details, contact your local council or visit: www.recycle-more.co.uk

Guarantee

This item is guaranteed for 5 years in respect of defects found to be due to faulty workmanship or materials. Proof of purchase is required for the validity of the guarantee. This guarantee is no longer valid in the case of accidental damage, alteration, repair by any unauthorised persons or poor maintenance. This guarantee in no way affects your statutory rights. This guarantee is only valid if the item has been used solely for domestic purposes. Please retain these instructions for future use.

Technical Support

John Lewis & Partners Technical Support on **03301 230106**

