

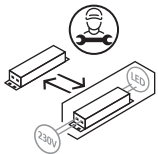
Product information	<ul style="list-style-type: none"> <li>Indoor/bathroom use only</li> <li>Non-dimmable</li> <li>Clean the fitting with a soft dry cloth. Do not use abrasive chemical cleaners as this will damage the finish</li> <li>Do not use this product if the shade is cracked or damaged</li> </ul>
---------------------	---

Aftercare and Troubleshooting	If there are technical issues with this product that you can't solve, please contact your nearest John Lewis & Partners shop or call Technical Support on 03301 230106.
-------------------------------	---

Specification	Max power: 6W Rated input: 220 –240V, 50Hz IP rating: 44 Weight: 0.25kg Lumen output: 520 Colour temperature: Cool white (4000K) This product contains a light source of energy efficiency class E For further information please visit: <a href="http://www.lighting-info.co.uk/110274">www.lighting-info.co.uk/110274</a>
---------------	--




Non-replaceable light source



Replaceable control gear by a professional

5-year guarantee	At John Lewis & Partners we test every light to high quality standards. That means we can offer you a 5-year guarantee.
------------------	---

Recycling	This symbol  indicates that this product should not be treated as normal household waste and it should be recycled. John Lewis & Partners do not operate instore take back, but as members of the Distributor Take Back scheme have funded the development and upgrade of recycling facilities across the UK. Please take it to your nearest collection facility or for further details contact your local council or visit <a href="http://www.recycle-more.co.uk">www.recycle-more.co.uk</a> .
-----------	---

John Lewis plc  
SW1V 2QQ  
[johnlewis.com](http://johnlewis.com)

Made in China

UK  
CA





IP44



12/04/2024

Please retain these instructions for future reference.



# LED DECO ROD BATHROOM WALL LIGHT

## USER GUIDE



Product Code:  
70259518  
70259519  
70259520


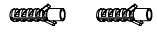

**Getting started**

Thank you for purchasing this John Lewis & Partners product. For your safety, and to make sure everything is working properly, please read the instructions carefully before use.

**Warnings**

This is a Class II product and must NOT be earthed.  
It is recommended that this fitting is installed by a qualified electrician.  
Install in accordance with the IEE Wiring regulations and the Building Regulations.  
To prevent electric shock switch off at mains supply before installing or maintaining this fitting. Ensure other persons cannot restore the electrical supply without your knowledge.  
If you are in any doubt, please consult a qualified electrician.  
This light fitting should be connected to a 5 amp fused circuit.  
If replacing an existing fitting, make a note of the connections.  
This product is rated IP44. This product is suitable for indoor use only.  
This product is suitable for installation on surfaces with normal flammability e.g. wood, plasterboard, masonry. It is not suitable for use on highly flammable surfaces (e.g. polystyrene, textiles).  
When moving or cleaning, always switch off at the mains and allow the module to cool before handling.

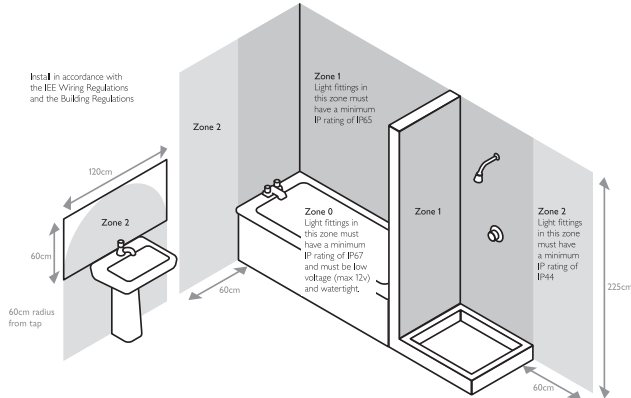
**Parts list**

Description	Image	Quantity
Light fitting		x 1
Wall plugs		x 2
Screws		x 2

**Assembly**

This product has special protection against the ingress of moisture and is IP44 rated.

This product is suitable for use in Zone 2 and outside Zones of a bathroom. See diagram. **If installing in a bathroom a 30mA RCD must be used - in accordance with IEE Wiring Regulations and the Building Regulations.**

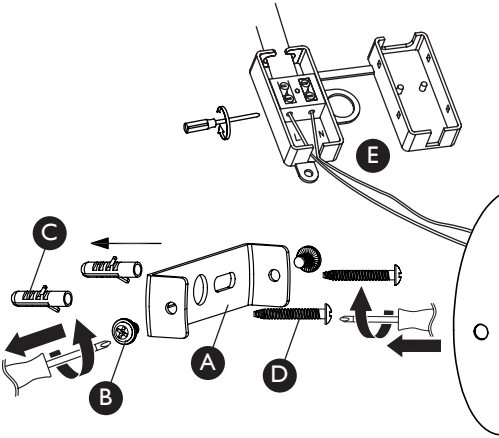


**Product assembly**

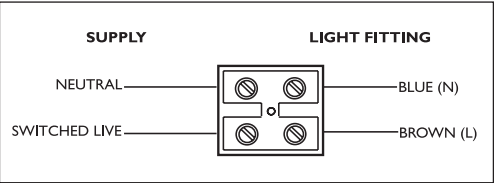
**Step 1**  
Refer to assembly diagrams right. Carefully unpack the carton, making sure all the parts are present before assembly. Before removing the existing fitting, carefully note the position of each set of wires.

**Step 2**  
Remove the fixing bracket (A) from the product by unscrewing the two side screws (B) and retain for reuse. Ensure there is a solid mounting surface to support the weight of the light fitting. Using the fixing bracket as a template, mark the position of the mounting holes. Drill holes and fit supplied wall plugs (C) (suitable for masonry only). Take care to avoid damaging any concealed wiring and pipes.

Fix the bracket to the wall using supplied screws (D).



**Step 3**  
Having identified the household wiring from your existing light fitting, connect to the connection block (E) inside the product in the following way. Check that: You have correctly identified the house wires. The connections are tight. No loose strands have been left out of the connection block. The lid is closed securely over the terminal block.



**Step 4**  
Refit the product onto the fixing bracket and secure with the screws removed in Step 2. Take care not to trap any wiring. Make sure the product is correctly orientated with the drain hole (F) at the bottom.

**Step 5**  
Turn on the power and test.

