

**Recommended bulb**

1 x 5W LED GU10

Bulb included

**Specification**

Max power: 6W


Voltage: 220~240V, 50Hz


IP20

Weight 0.5Kg



Please retain these instructions for future reference.

This symbol  indicates that this product should be installed so the bulb is no closer than 30cm from the surface it is illuminating

This symbol  indicates that this product should not be treated as normal house-hold waste and it should be recycled. John Lewis does not operate in store take back, but as members of the Distributer Take Back scheme have funded the development and upgrade of recycling facilities across the UK. Please take it to your nearest collection facility or for further details contact your local council or visit [www.recycle-more.co.uk](http://www.recycle-more.co.uk).

We have taken great care to ensure that this product reaches you in perfect condition. However, should any parts be damaged or missing please e-mail [lightingparts@JLPspares.co.uk](mailto:lightingparts@JLPspares.co.uk)

**Trouble shooting:**

Why is the light not working when switched on?

Check your power supply is switched on

Turn off light and check that the bulb is inserted correctly

Check the bulb is still in working order.

John Lewis partnership

171 Victoria Street

London SW1E 5NN

[Johnlewis.com](http://Johnlewis.com)

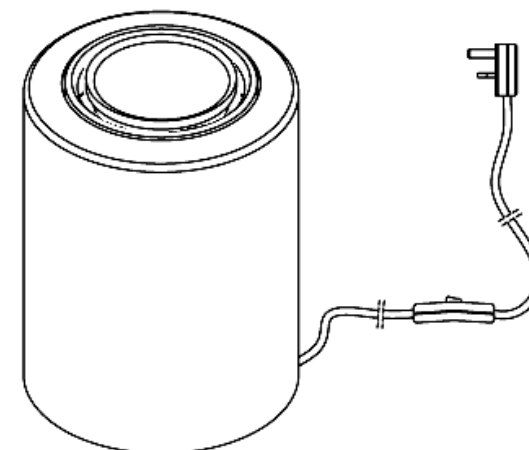
Made in China

Issue 02 12/19

# John Lewis

## User manual

### Didi table light



Thank you for purchasing this Didi table lamp. Please read the instructions carefully before use to ensure safe and satisfactory operations of this product.  
Please keep this instruction for future reference.

### Warnings!

The supply cable runs through the inside of this product. Take care not to place undue stress on the cable whilst unpacking to prevent the possibility of a poor connection.

If you are in any doubt consult a person competent to give advice on the assembly of electrical equipment.

If the external flexible cable of the lamp is damaged it shall be exclusively replaced by the manufacturer or his service agent or a similar qualified person in order to avoid a hazard.

To prevent electrocution switch off at the mains supply before assembling or maintaining this fitting. Ensure the plug is not connected to any power supply and read instructions before assembly.

Always be sure to use the correct type and wattage of bulbs as indicated on the fitting. Never exceed the wattage stated.

When changing the bulb, always switch off at the mains and allow the old bulb to cool down before handling. Dispose of used bulbs carefully.

**Caution! The bulb and surrounding parts can become hot during use.**

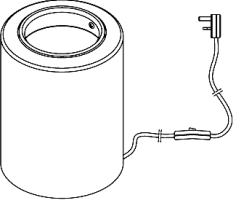

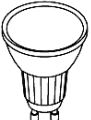
The fitting should be installed so the bulb is no closer than 30cm from the surface it is illuminating = 0.3m  
For indoor use only.

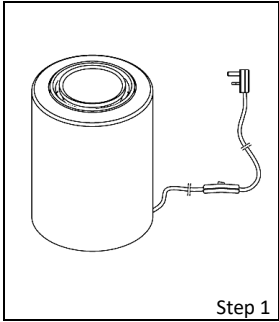
### Care instructions

We recommend cleaning with a soft dry cloth. Do not use abrasive materials as these will damage the finish.

Replace bulbs from John Lewis or established brand of the same type and compatibility.

### Parts list

	Part List	Qty		Part List	Qty
A		1	B		1
			C		1



### Step 1

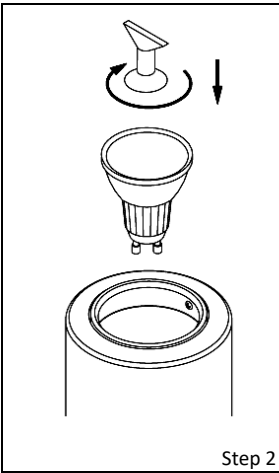
#### Instructions for use

Carefully unpack the product from its packaging.

LED Bulb is pre-fitted to the product.

This product has a tilt angle range of approximately 10°.

Insert the wall plug into mains power outlet.



#### Bulb Replacement

Unplug from wall plug from the mains outlet and allow the lamp to cool before replacing the bulb.

Remove the bulb using bulb suction fitting tool, turn anticlockwise to remove bulb.

Insert a new bulb into the lamp holder. (see below)

Table lamp is now ready for use.

Supplied LED GU10 bulb information:

