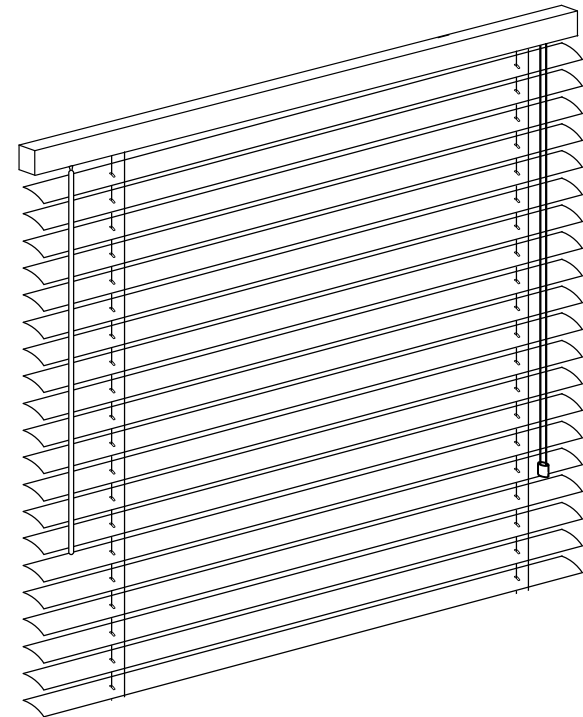


Please retain these instructions for future reference.

ANYDAY

JOHN LEWIS
& PARTNERS

Aluminium Venetian Blind User Guide



John Lewis Plc
171 Victoria Street
London SW1E 5NN
johnlewis.com

Made in China
Batch code:

INTRODUCTION


Thank you for purchasing this Venetian blind. Please read the instructions carefully before use to ensure safe and satisfactory operation of this product.

It is recommended that this blind should only be installed by persons competent in DIY. At John Lewis, we are committed to making great products possible. From our in-house Design Team, to our Buyers, we work together to bring great design to life. Our Product Technologists work collaboratively with our Buyers and suppliers to ensure the legality, safety and quality of the product we sell. We are all committed to designing and developing products to the highest industry standards.

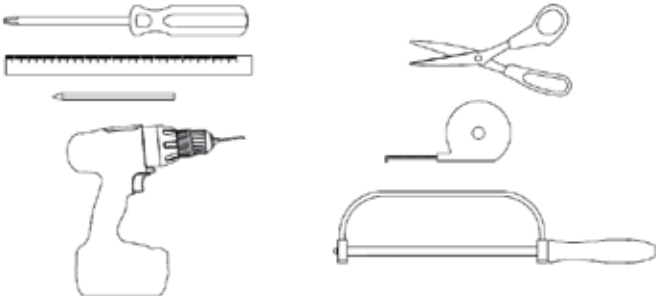
We hope you are happy with your product and welcome any feedback or comments you may have.

VIDEO INSTRUCTIONS

Scan the QR code to link to our online videos that guide you in getting a perfect fit for a Roller blind. Alternatively follow the link johnlewis.com/blindassembly



TOOLS REQUIRED




PEOPLE TO ASSEMBLE

One person

TIME TO ASSEMBLE

1 Hour

WARNINGS



- ⚠ Small parts – choking hazard.
- ⚠ Keep small parts out of reach of children
- ⚠ Ensure the product is fully assembled as illustrated before use.
- ⚠ Young children can be strangled by loops in pull cords, chains, tapes and inner cords that operate the product.
- ⚠ To avoid strangulation and entanglement, keep cords out of reach of children.
- ⚠ Cords may become wrapped around a child's neck.
- ⚠ Move beds, cots and furniture away from window covering cords.
- ⚠ Do not tie cords together. Make sure cords to not twist and create a loop.
- ⚠ The safety clips should be positioned high enough to be out of reach of small children yet accessible to adults.
- ⚠ All safety clips for blinds need to be fixed to a solid surface using a screw and fixing suitable for the wall or surface material – see guide to wall mounting and fixings on the last page. These items should not be glued or stuck in place.
- ⚠ The head rail should not be installed less than 1.5m from the floor.

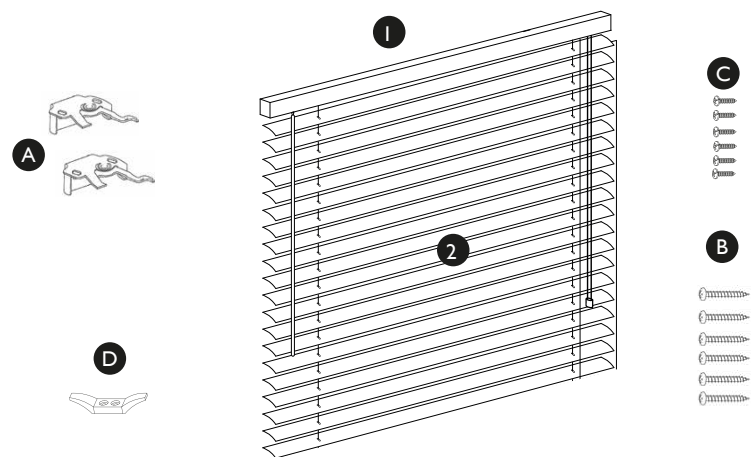
DO'S

- ✓ Please read all safety warnings and installation information fully before installation.
- ✓ This product should be fitted in accordance with the manufacturers fitting instructions.
- ✓ Check the pack to make sure you have all the parts listed.
- ✓ Take care when drilling on glazed tile surfaces in case the drill slips.
- ✓ Check that all screw and bolt assembly fittings are tightened and inspect on a regular basis.
- ✓ Use the safety device provided.
- ✓ Please read our guide on wall mounting and fixing on the inside back cover.

DONT'S

- ✗ Do not over tighten screws or bolts.
- ✗ Do not use power tools to construct as over tightening and failure may occur.

PARTS LIST



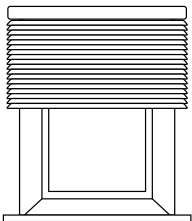
Code	Item	Quantity	Dimension	Illustration
1	Headrail	x1		
2	Slats	x1		
A	Mounting Brackets < 110 cm > 110 cm	x2 x3	?	
B	Screw 1 < 110 cm > 110 cm	x6 x6	?	
C	Screw2 < 140 cm > 140 cm	x6 x9	?	
D	Safety Clip (cord accumulator)	2	?	

BLIND POSITIONING

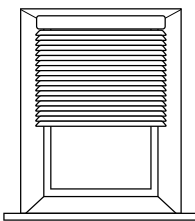
1.
Decide on
position of
your blind

Outside recess mount
Decide on the position
of the blind so that it
overlaps on both sides
equally. At least 5cm.

Inside recess mount
Decide on the position
of the blind so that it
will be clear of any
latches and fixtures.



Outside Recess



Inside Recess

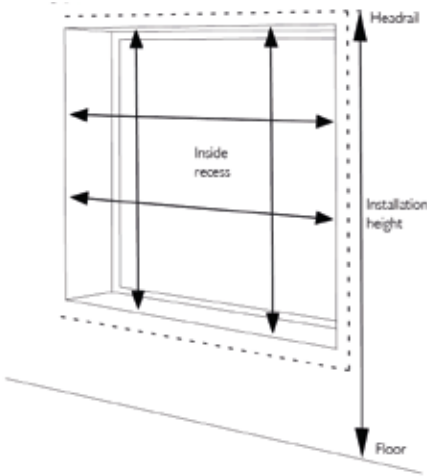
2.
Measuring

Inside window recess

Measure both the width and the length of the space to get the right dimensions. Remember to take measurements at different points and use the smallest to ensure accuracy. If you prefer to hang your blind in front of the recess, position it as far above as you choose, then measure the inside of the recess crosswise and add a minimum of 0.5cm to each side.

Outside window recess

If you're fitting your blind outside a recess, it's a matter of taste how high or low you fit it – though we recommend leaving around 10cm above the window frame or recess.

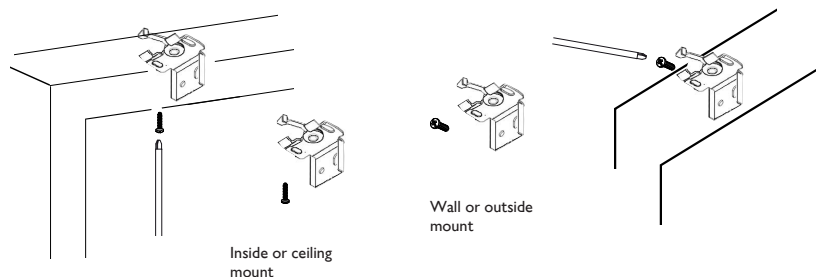


1. Fixing the Brackets

1 2 C

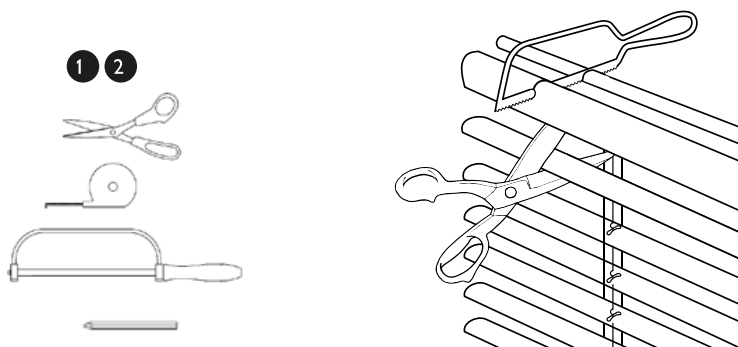


- 1) Please ensure that the headrail is not installed less than 1.5meters from the floor.
- 2) The brackets are designed for face or top fixing to the window frame, wall, or ceiling.
- 3) Attach the brackets to the headrail by inserting into the channel on the reverse.
- 4) Having decided the positioning of the blind, present it to the desired position, making sure it is centered and level.
- 5) Mark the location of each bracket with a pencil.
- 6) Remove each bracket from the headrail by pressing the locking tab at the bottom of the bracket.
- 7) Place each bracket on its location markings and mark through the desired screw hole positions.
- 8) Use the screws provided to fix the brackets to wood. For masonry , use appropriate fixings.



2. Trimming your Blind

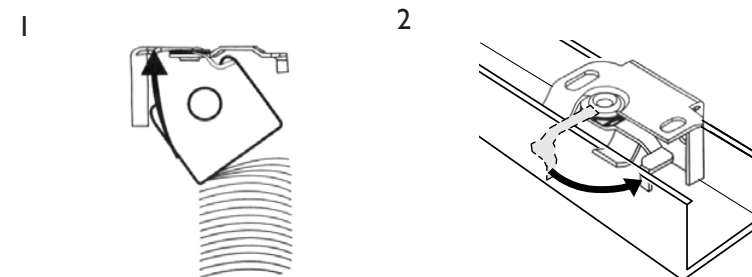
If fitting outside the recess, you will probably not want to trim the blind, but you can of course if you wish. If fitting inside the recess, measure the overall width of the recess and deduct 6mm then cut to desired dimension. N.B Remember to trim equal amounts off each end to keep the ladder-cords central. 6cm is the maximum width which can be trimmed off the blind at each end. Cut the head rail with a hacksaw and then using sharp scissors, trim each slat to the same width as the head rail. The bottom rail should also be cut with a hacksaw.



3. Installing the Blind

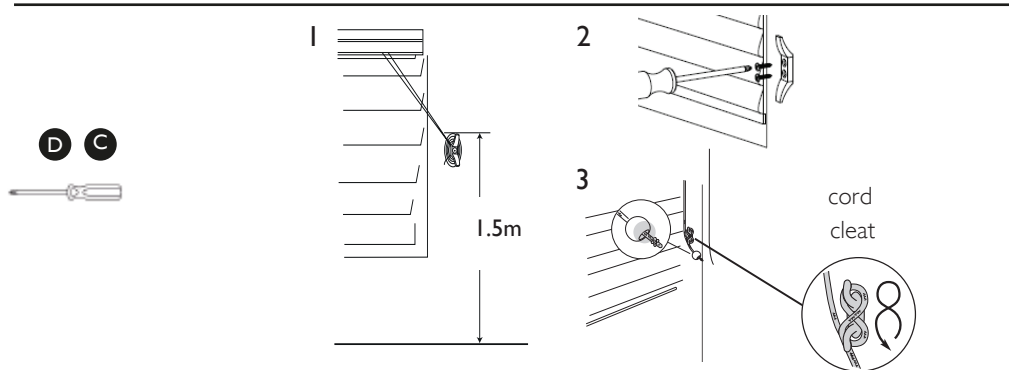
- 1) Place inside edge of the front head rail onto the hooks of the brackets. Rotate the back of the head rail upwards towards the back of the bracket until the head rail engages into place.
- 2) Look into position with bracket lever.

1 A

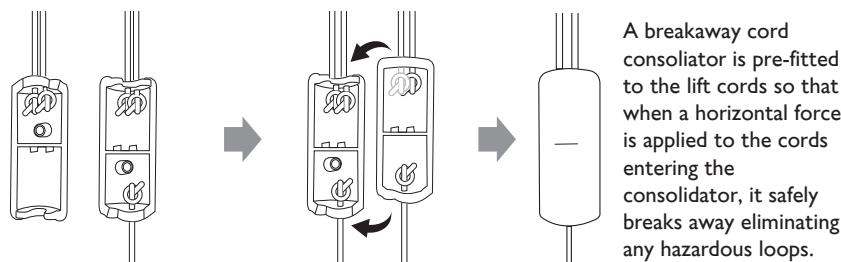


4. Fixing the Safety device

- 1) The safety cleat is designed for fitting onto an adjacent surface as close to the headrail as possible and not less than 1.5mts from the floor
- 2) Place cleat onto an adjacent wall or where the cleat is to be fixed so that the cords can't be easily reached
- 3) Make sure the cord is pulled tight and wrap a figure of eight to accumulate all of the cord after each use.



5. Cord consolidator



If the cord consolidator is pulled apart: Untangle and untwist cords.

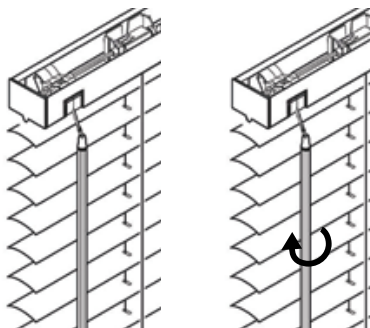
For 2 cords: Press the cord consolidator together until it is fully closed. For 3 cords: Place the loose cord in the opening in one half of the cord condenser and press the cord condenser together until it is fully closed.

For 4 cords: Place one of the loose cords in the opening in one half of the cord consolidator, the remaining loose cord in the opening in the other half and press the cord consolidator together until it is fully closed.

The cord consolidator is positioned to stop 5cm from the head-rail when in the fully deployed position.

This is in accordance with EN13120 child safety requirements.

6. Operating the Blind



To open and close the blind, first attach the control wand to the eyelet. Turn the control wand to angle the slats. To raise or lower the blind, pull the cord towards the center of the blind. To raise the blind, pull down the cord. To lower it, let the weight of the blind pull the cord through your fingers. When the blind is at the required height, give the cord a slight pull to the outside of the blind to lock into position.

GUIDE TO WALL MOUNTING & FIXINGS

KEY INFORMATION

Warning: Although we have provided fixings, different wall materials require different types of screws / fixings. Please ensure you use the correct screws / fixings for your type of walls and seek professional advice if you are not sure. Failure of the product due to incorrect fixings is the responsibility of the installer.

Please note that the screws provided with this product are suitable for a solid brick wall.

Important - When drilling into the walls always check that there are no hidden wires or pipes etc.

Take care when drilling on glazed tile surfaces in case the drill slips.

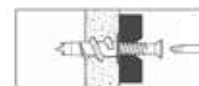
FIXINGS

You can use one of the following types of wall plug if your walls are made of brick, breezeblock, concrete, stone or wood.



General Purpose wall plug

Generally aerated blocks should not be used to support heavy loads, use a specialist fitting in this case. For light loads, general – purpose wall plugs can be used.



Plasterboard wall plug

For use when attaching light loads on to plasterboard partitions.



Cavity Fixing wall plug

For use with plasterboard partitions or hollow wooden doors.



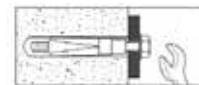
Cavity Fixing – Heavy Duty wall plug

For use when fitting or supporting heavy loads such as shelving, wall cabinets and coat racks.



Hammer Fixing wall plug

For use with walls stuck with plasterboard. The hammer fixing allows it to be fixed to the wall rather than the plasterboard. Always check the fixing is secure to the retaining wall.



Shield Anchor wall plug – Heavy loads

For use with heavier loads such as TV and Hi-Fi speakers and satellite dishes etc.

PRODUCT INFORMATION

CARING FOR YOUR PRODUCT

The slats may be dusted using a dry cloth. To clean, wipe with a barely damp cloth. The product is maintenance free however we recommend that regular checks are completed to ensure that no components have been damaged, which could result in operating difficulties or cause a safety risk.