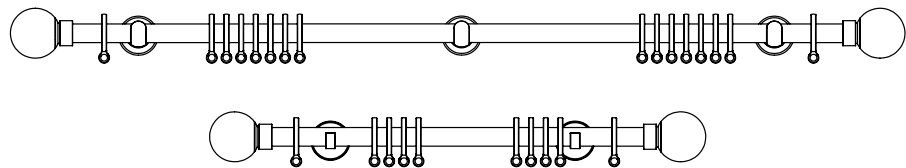


Pole bar curtain pole

These instructions are for wall fixing brackets.

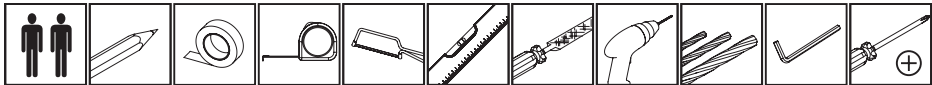
Thank you for purchasing this product. Please read the instructions carefully before use to ensure safe and satisfactory operation of this product.



Pre-assembly preparation

Please ensure instructions are read in full before attempting to assemble this product.

Necessary Tools



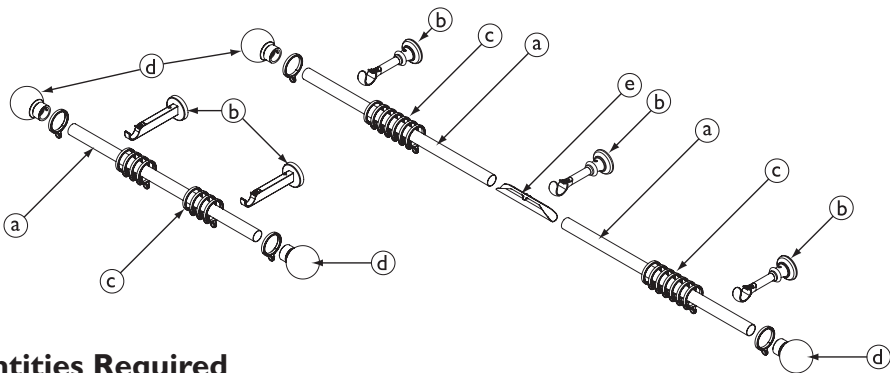
Please check the pack contents before attempting to assemble this product. A full checklist of components is given in this leaflet. If any components are missing, please contact the retailer from whom you bought this product.

This product takes approximately **30 MINUTES** to assemble with **2 PEOPLE**.

The fittings pack contains **SMALL ITEMS** which should be **KEPT AWAY FROM YOUNG CHILDREN**.

Read this leaflet in full before commencing assembly.

Fittings and parts checklist



Quantities Required

		Pole Length					
Part		1.2m	1.5m	1.8m	2.4m	3.0m	3.6m
a	Pole	1	1	1	2x1.2m	2x1.5m	2x1.8m
b	Brackets	2	2	2	3	3	3
c	Rings	12	18	18	24	30	36
d	Finials	2	2	2	2	2	2
e	Joiner	n/a	n/a	n/a	1	1	1

Each Bracket is supplied with
- 3x Screws
- 3x Wall plugs
- 1x Allen key

Recommended Maximum curtain weights


	19mm Diameter Pole Length					
	1.2m	1.5m	1.8m	2.4m	3.0m	3.6m
2 Brackets	10.5kg	4.25kg	3.25kg	n/a	n/a	n/a
3 Brackets	n/a	18.75kg	14.5kg	17.25kg	10.5kg	9.5kg

	28mm Diameter Pole Length					
	1.2m	1.5m	1.8m	2.4m	3.0m	3.6m
2 Brackets	16.25kg	13.5kg	9.75kg	n/a	n/a	n/a
3 Brackets	n/a	20kg	17.25kg	19.25kg	18.75kg	17.25kg

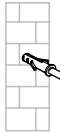
Recommended maximum curtain weight is calculated after fitting the pole to a secure wooden batten. We recommend for better support to use a wooden batten which is larger than the width of the backplate. If you are unsure if the product is suitable please ask a partner in your John Lewis store.



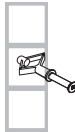
Wall fixing - if in doubt seek professional advice



Wood
If fixing to wood make sure that it isn't chipboard as screws can easily pull away from the core structure



Brick or Masonry
Use an appropriate wall plug provided you are sure your wall is sound

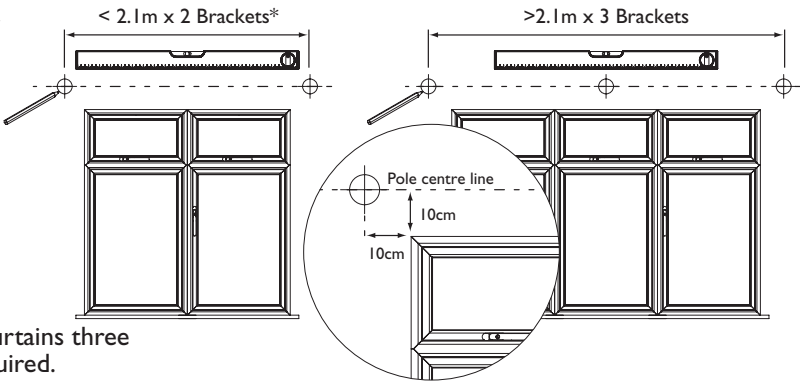


Cavity wall
Special toggle wall plugs are needed. Seek expert advice

Step by step assembly instructions

Step One

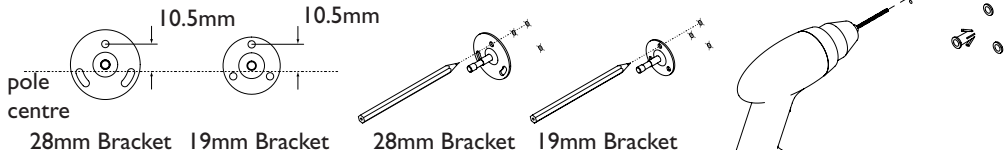
1. Measure windows.



*For heavy weight curtains three brackets may be required.

Step Two

- 1. Use the correct wall plugs and screws for the type of wall to which you are mounting your pole. If you are unsure please consult your local builders merchant or DIY store.
- 2. Use the wall mounting plate as template to mark bracket positions onto the wall.
- 3. Drill holes and fit correct plugs and screws.
- 4. Screw the wall mounting plate to wall.



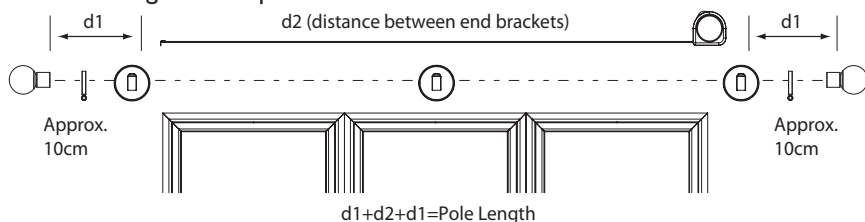
Step Three

1. Slide the bracket onto the wall mounting plate, ensuring that the base of the bracket is flush with the wall.
2. Tighten the locking screw.

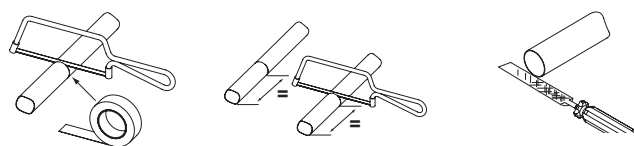


Step Four

1. Calculate the length of the pole.

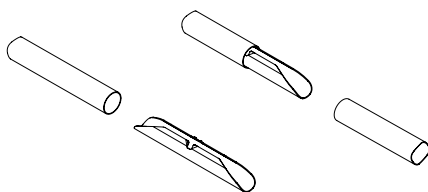


2. Mask area to be cut to avoid damaging pole.
3. When using two poles cut equal lengths from each pole.
4. File sharp edges to avoid injury or damage to other components.



Step Five

1. Join poles if required by sliding a joining piece into the uncut end of a pole.
2. Slide the second pole onto the joining piece taking care to push equal lengths of the joiner into each pole.
3. Always join the uncut ends of the pole.
4. Pole joints should always be at the half way point of the installation length and supported with a bracket.



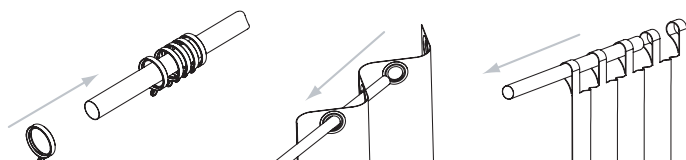
Step Six

Standard Curtains

1. Leaving 2 rings to one side, slide the remaining rings onto the pole, you will require approximately 1 ring per 10cm of pole.
2. When using a centre bracket an equal number of rings will need to be used either side of the bracket.

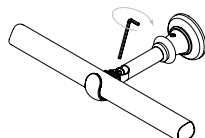
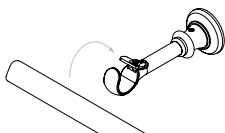
Eyelet & Tab Top Curtains

1. Slide the curtain onto the pole before fitting the pole to the brackets.
2. Leave the last eyelet or loop hanging from the end of the pole.
3. When using a centre bracket a curtain will need to be hung from each end of the pole.



Step Seven

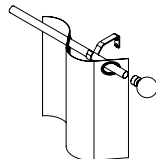
1. Loosen the pole retainer and rotate 90 degrees.
2. Place pole in bracket.
3. Rotate the pole retainer back 90 degrees returning into the slot and tighten screw until the pole does not slide in the bracket.



Step Eight

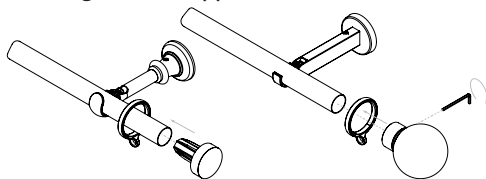
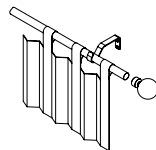
Standard Curtains

1. Position one ring between the bracket and the finial.
2. Push the finial onto the end of the pole.
3. Tighten the retaining screw.



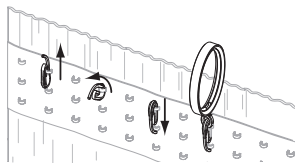
Eyelet & Tab Top Curtains

1. Position one loop or eyelet between the bracket and the finial.
2. Push the finial onto the end of the pole.
3. Tighten the retaining screw if applicable.



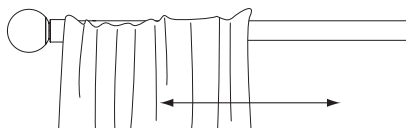
Step Nine - Standard Curtains

1. Equally space curtain hooks along curtain header; you will require one hook for every ring.
2. Place hooks through the eyelet on the ring.



Step Ten

1. Test the installation by drawing the curtains across the pole.



Safety Instructions

Only use a Step Ladder to install this product.

Do Not over reach. Always move the Step Ladder so that you are in a safe working position.

Do Not hold or lean on the track to support your weight.

We recommend you use two people for installation of larger tracks.

Take care when using power tools, use of a Residual Current Device (RCD) is recommended.

Always use eye protection when drilling.

Beware of hidden pipe runs and cables.

No liability will be accepted for damage or injury caused by incorrectly installed or assembled furniture.

PLEASE KEEP OUT OF THE REACH OF YOUNG CHILDREN.

SMALL PARTS - CHOKING HAZARD

PLEASE KEEP THESE INSTRUCTIONS FOR FUTURE REFERENCE

PLEASE KEEP THE BATCH CODE ON THE PACKAGING FOR FUTURE REFERENCE IF ANY QUERIES

John Lewis Partnership 171 Victoria Street London SW1E 5NN

www.johnlewis.com

9004L/ISS5