

John Lewis

# Curve chair

Stock number: 811/ 12085

---

Thank you for purchasing this chair. Please read the instructions carefully before use to ensure safe and satisfactory operation of this product.

---



---

## Pre-assembly preparation

Please ensure instructions are read in full before attempting to assemble this product

---

### Necessary Tools



---

Please check the pack contents before attempting to assemble this product. A full checklist of components is given in this leaflet. If any components are missing, please contact the retailer from whom you bought this product..

This product is **HEAVY**, it should be assembled as near as possible to the point of use. **TAKE CARE WHEN LIFTING** to avoid personal injury and (or) damage to the product.

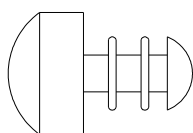
This product takes approximately **10 MINUTES** to assemble with **1 Person**.

The fittings pack contains **SMALL ITEMS** which should be **KEPT AWAY FROM YOUNG CHILDREN**.

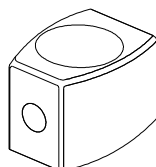
Read this leaflet in full before commencing assembly.

## Fittings and parts checklist

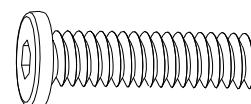
---



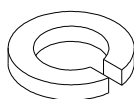
**A x4pcs**



**B x4pcs**



**C x4pcs**



**D x9pcs**



**E x1pc**



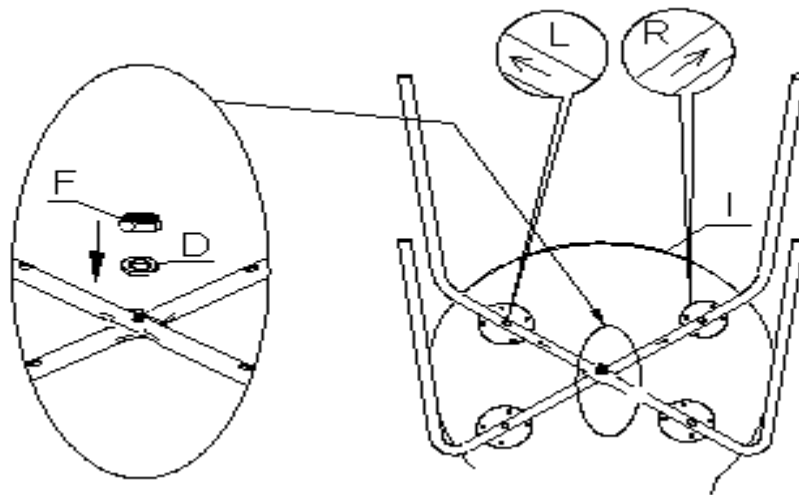
**F x1pc**

# Step by step assembly instructions

---

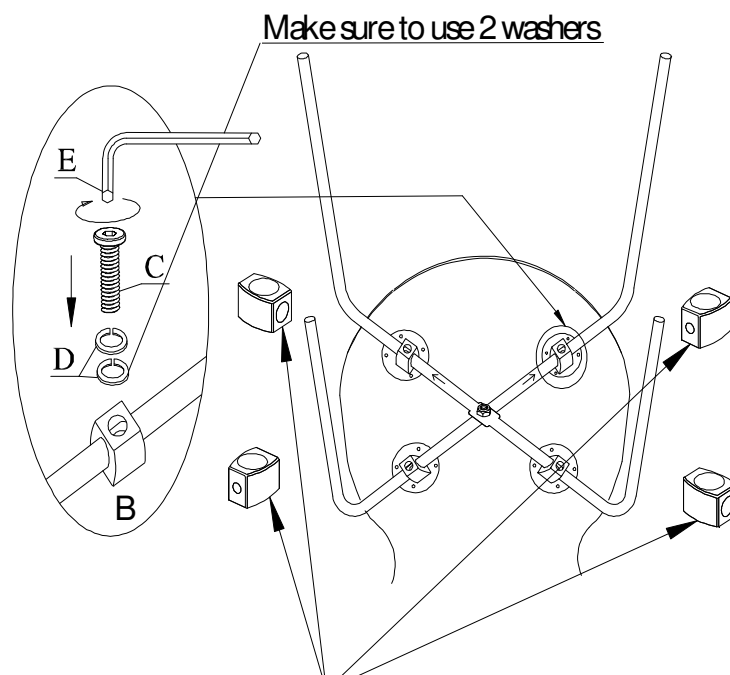
**1**

**WARNING:** Once chair is constructed, ensure all screws and nuts are fully tightened before use



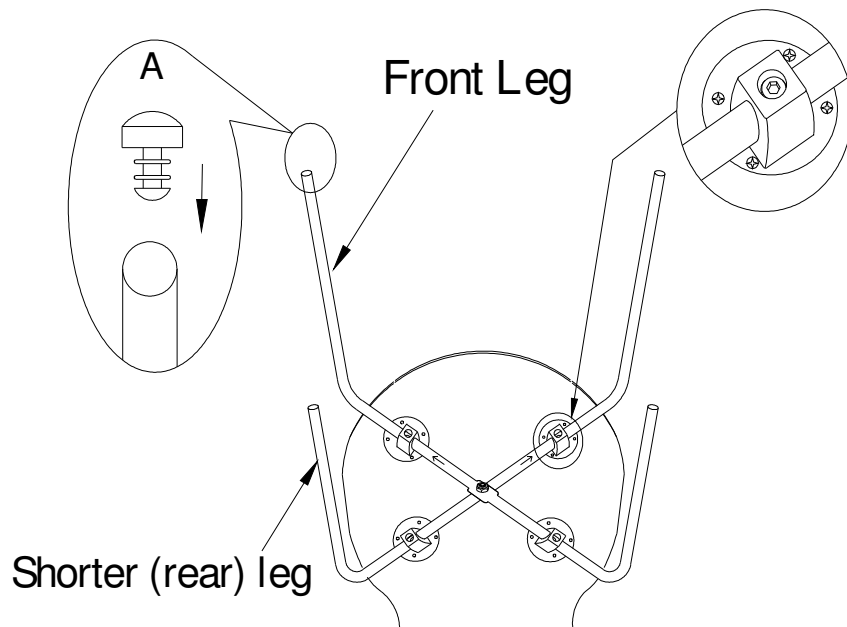
Fit item B before placing frame together

**2**



These four items (B) should be fitted during step 1

3



4



## Care and Maintenance

---

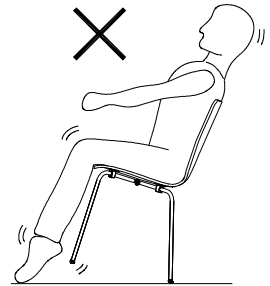
This chair should be cleaned with a dry or damp soft cloth. Do not use abrasive cleaners, which may damage the surface of the product

---

## Safety Instructions

---

Never tilt the chair. Ensure the chair is always placed firmly on the ground. Periodically check the tightness of all screws and retighten as necessary.



**PLEASE KEEP THESE INSTRUCTIONS FOR FUTURE REFERENCE**